

Lifedomus

Smart Vision

30/01/2018

Version 1.1

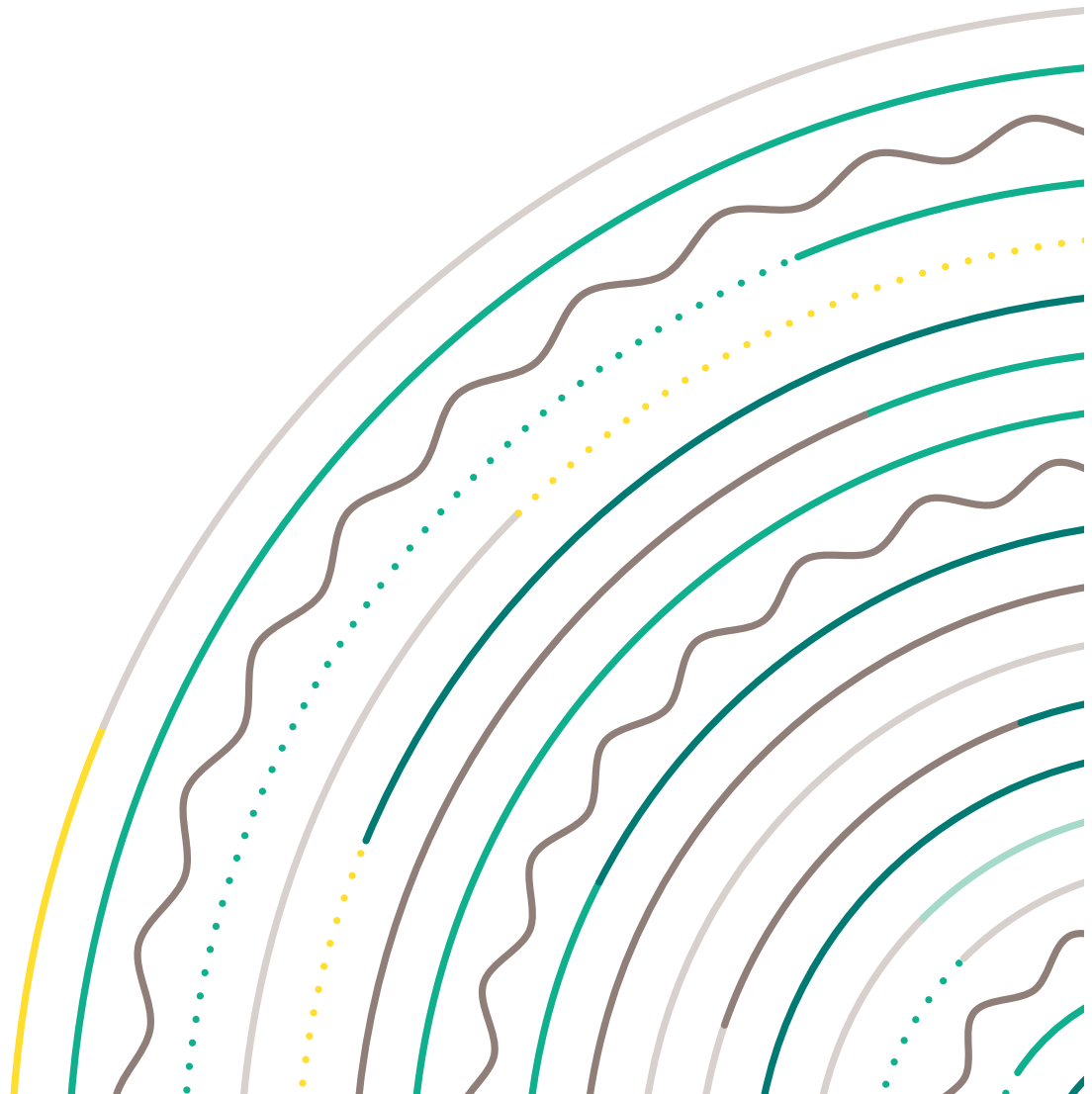


Table of contents

Table of contents	2
1 Introduction	3
2 Configuration	4
3 Use	6

1 Introduction

The Smart Vision functionality simply creates a home page for your Lifemodus project. It is available from version 1.4.126 onwards.

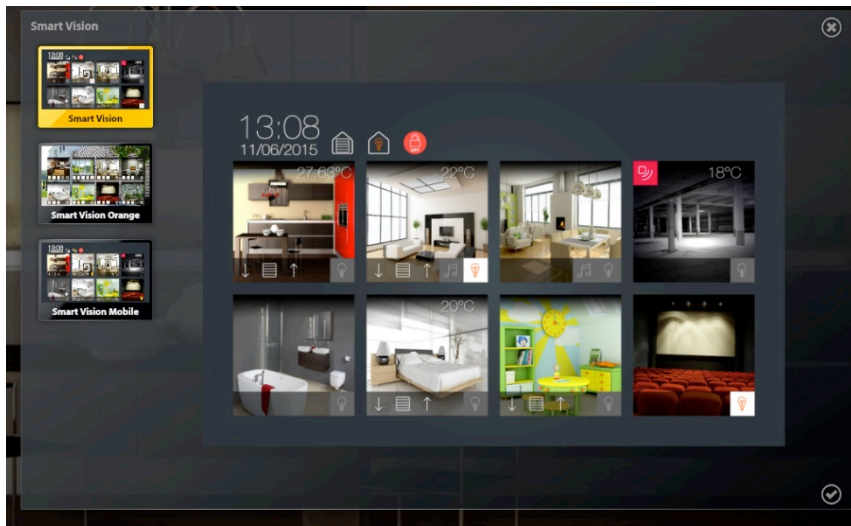
This page is based on Lifemodus' widgets system, enabling you to add data other than the default data or to change some of the icons.

2 Configuration

Open Design Studio, switch to edit mode, then click on the 'navigation' button.

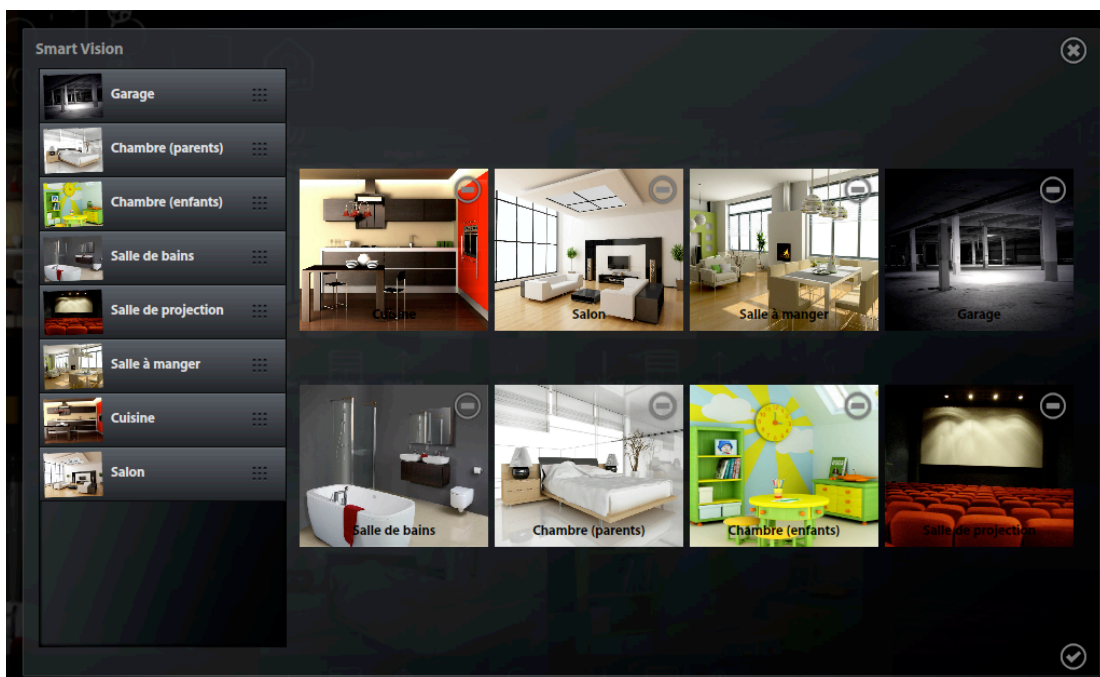
Two buttons will now be displayed. One creates a standard page and the other creates a Smart Vision page.

Clicking on 'Smart Vision' brings up a pop-up message with the list of designs delivered by Lifemodus. (The list can be enhanced subsequently).



Select the one that you want to apply and click on 'Confirm'.

You will now see 8 empty boxes, which materialise the rooms you want to display on the page. On the left is the list of rooms configured in Lifemodus, which you can move by dragging and dropping them in a box.



Then click on 'Confirm'. This page will now be the project's default page.

Notes:

- This page is made up of widgets generated at the creation stage and cannot change dynamically according to the changes made in Config Studio. We therefore advise you to create it after the project.
- The page can be modified either manually or you can delete it and create it again.
- Also, if you have added a multi-room management function after creating your Smart Vision page, you should ideally delete it and create a new one.
- If you have more than 8 main rooms, you can create several Smart Vision pages. After creating a new Smart Vision page with the required rooms, reorganise the pages, placing them in a sequence. This way, when you navigate, you will be able to directly toggle from one to the other.

3 Use

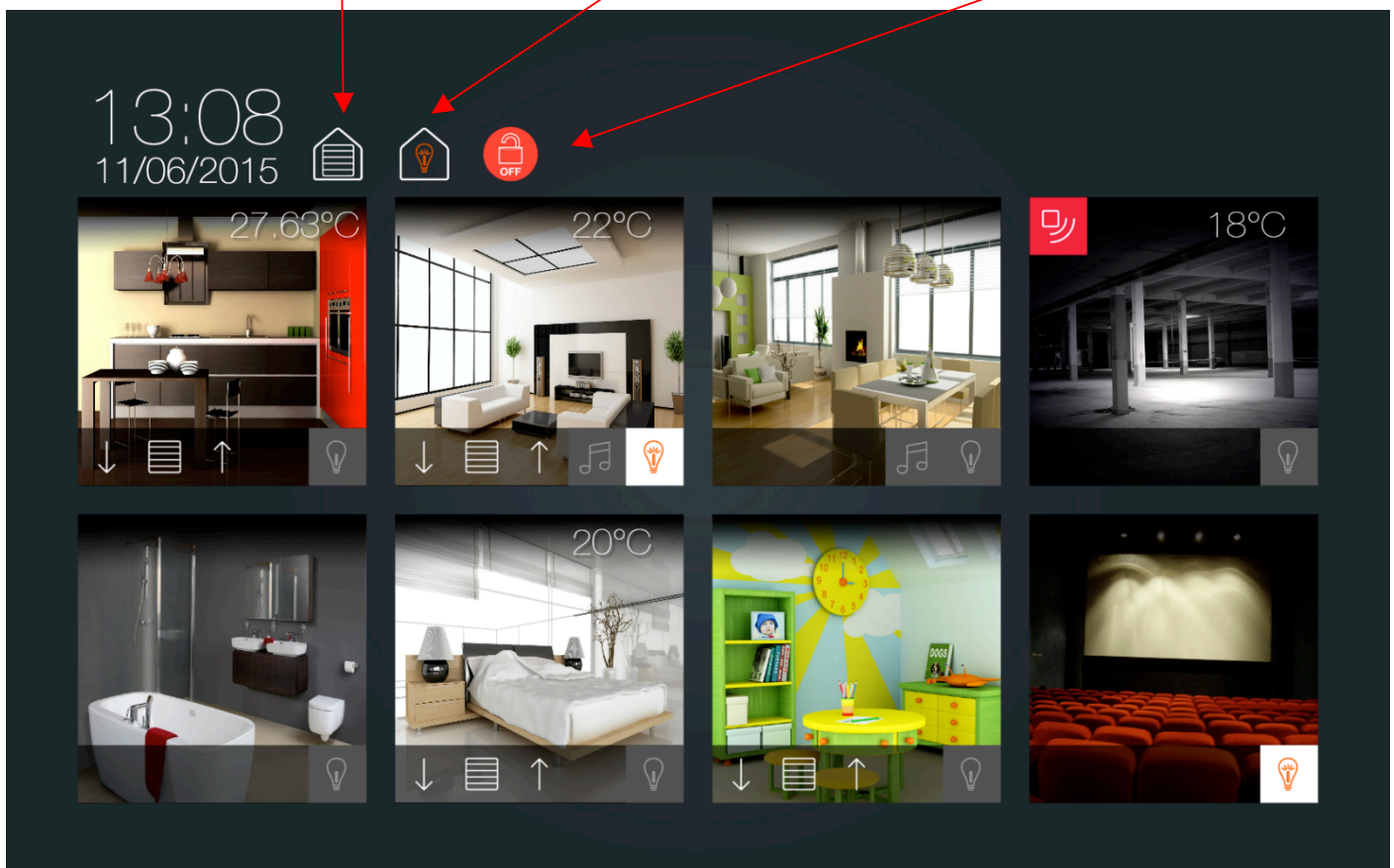
Home shutters state: All open, all closed, or undetermined position.

Click to close all the shutters.

Home lighting state: At least one light on or all out.

Click to switch all lights off.

State of the Tyxal + alarm control unit if it is part of your project.



Click on the image to navigate to the relevant page.

Each room is represented in the same manner and the icons are displayed according to the devices available in the room.

