



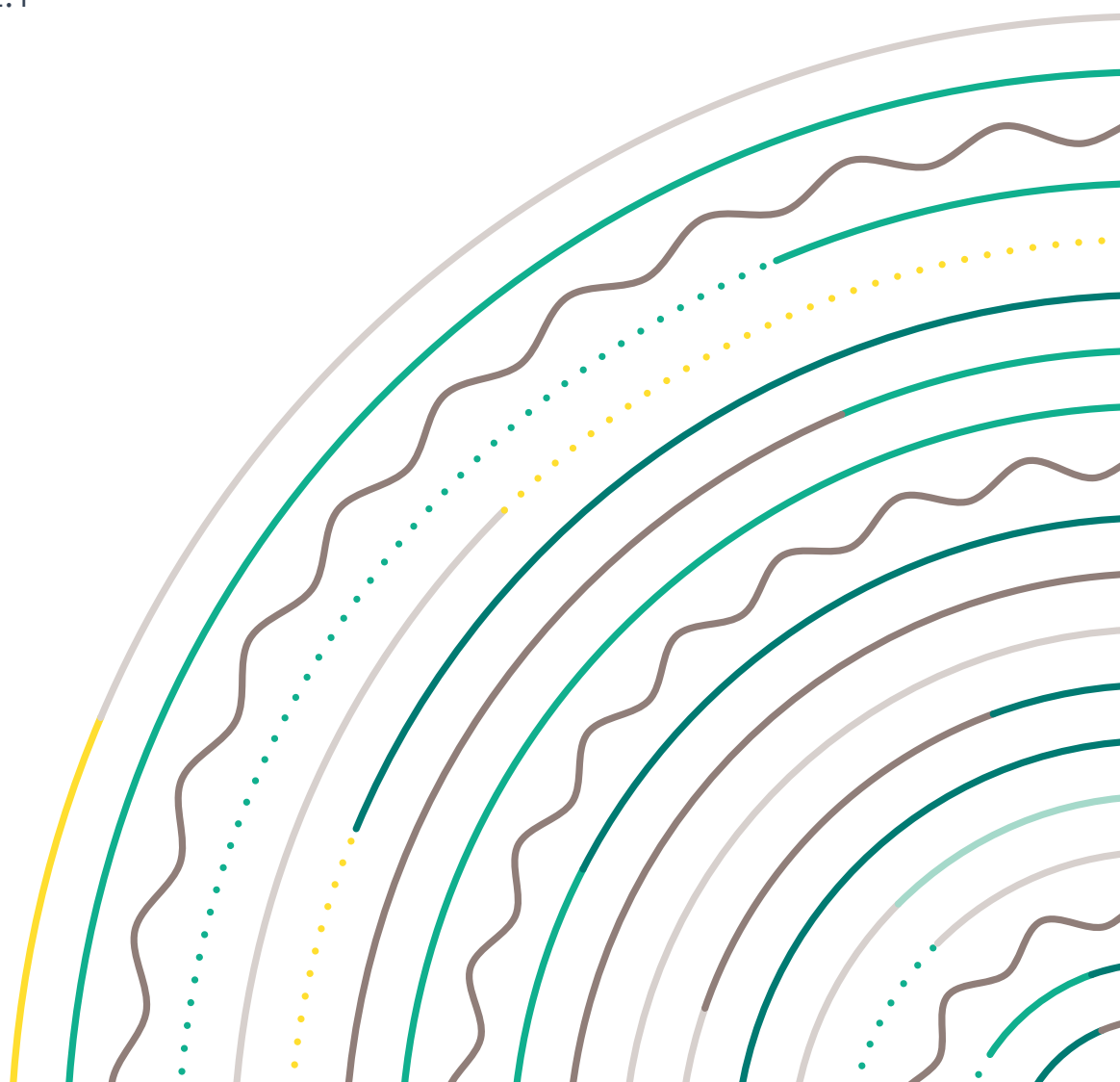
Lifedomus

Design studio

'What I See' - Photorealism

30/01/2018

Version 2.1



Design Studio: 'What I See' - Photorealism

Concepts

Design Studio's 'What I See' function specifies the text and/or photos to be displayed, according to the state feedback of one or more devices.

Creating widgets in the monitoring editor

In edit mode, add blank widgets in the following order.

To manage 3 lights, insert 2³ photos, i.e. 2 x 2 x 2 = 8 photos.

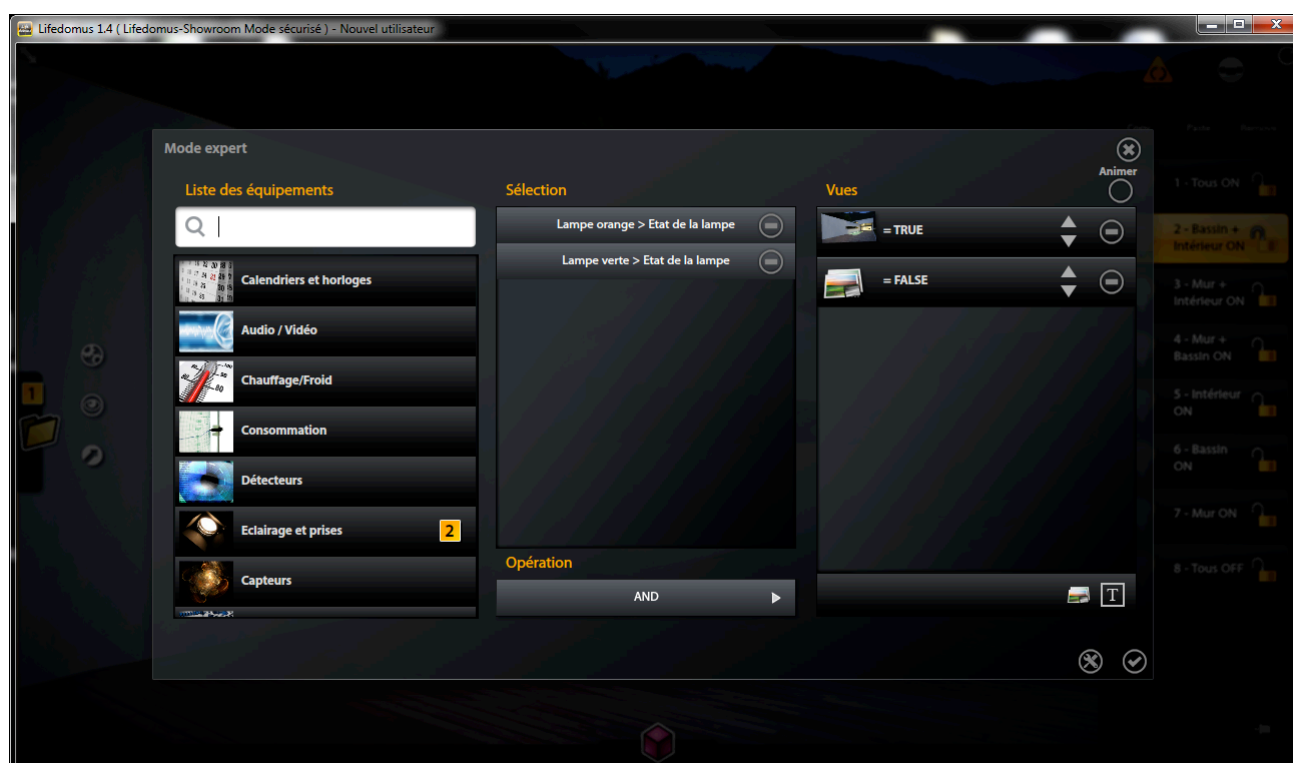


Add the information as shown in the summary table in the 'What I See' function of each widget.

To configure 'What I See':

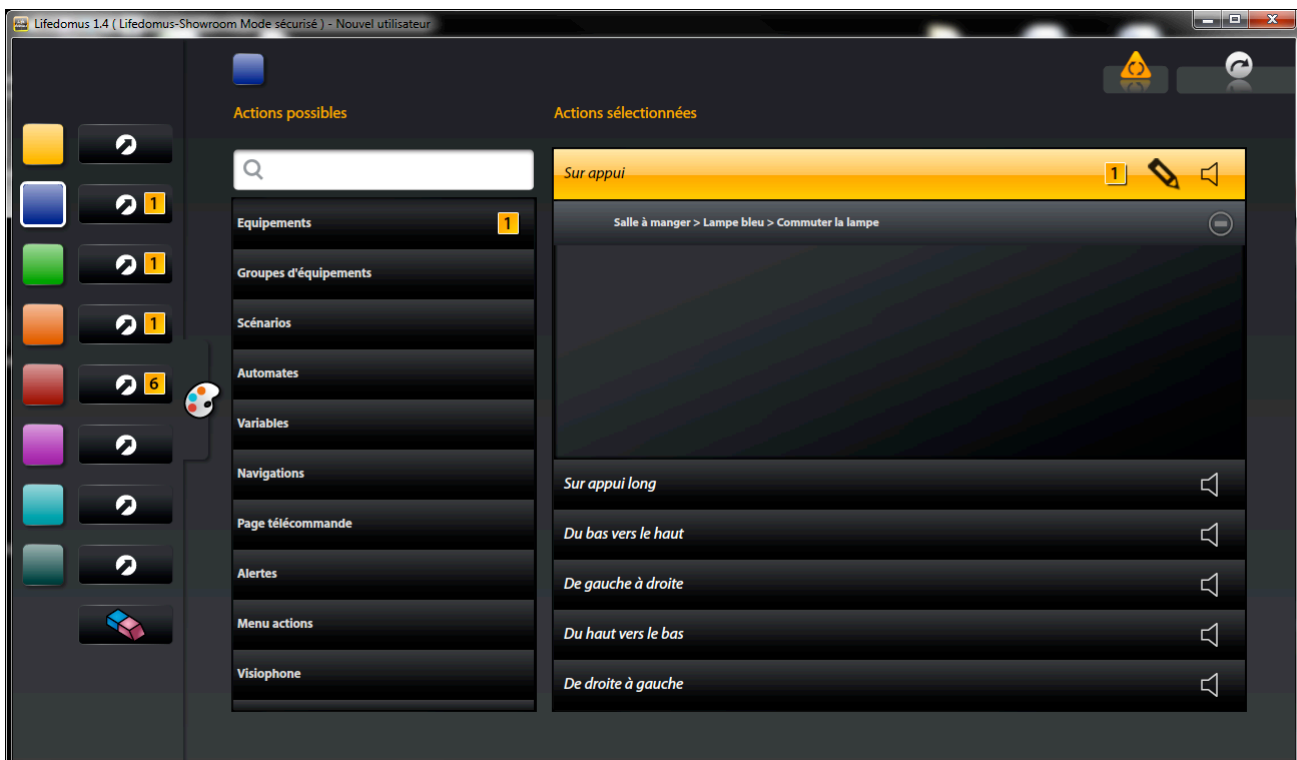
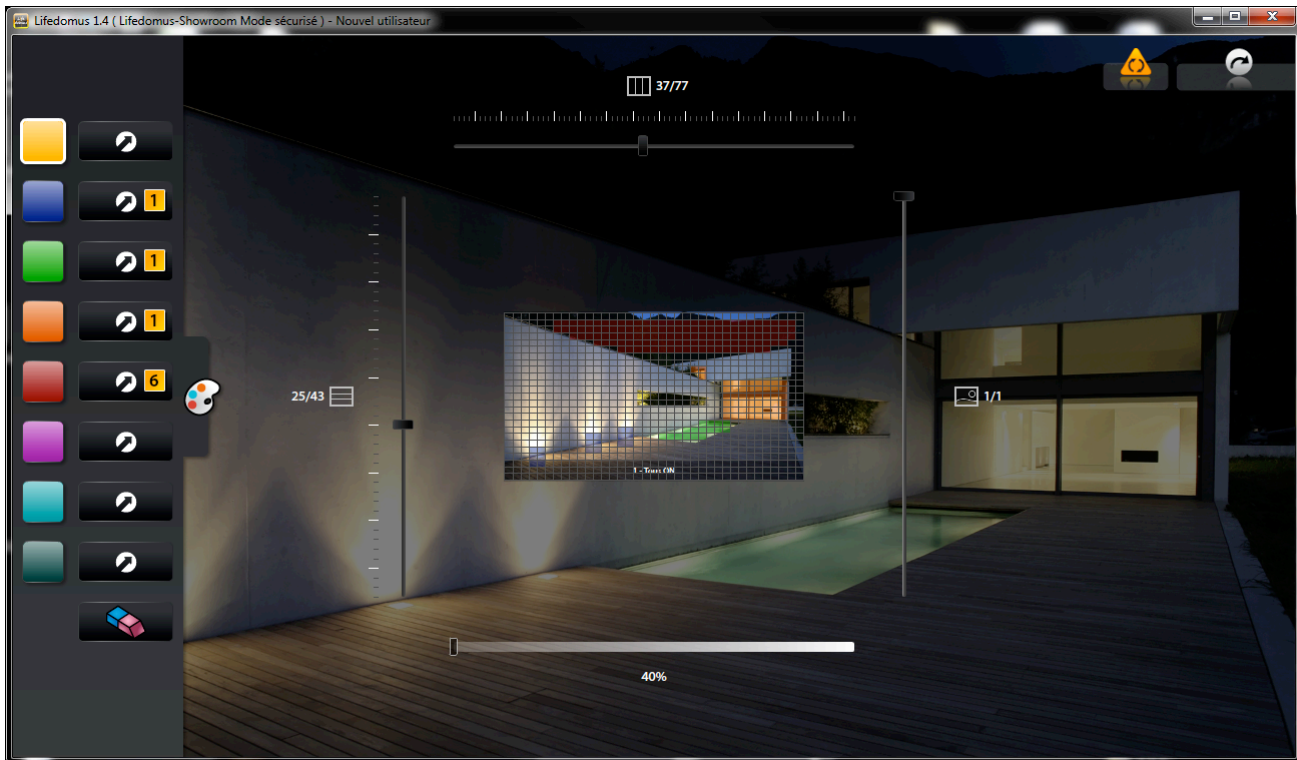
1. Open the 'Expert' mode.
2. Select the state feedback for the device or devices in the list.
3. Add the number of lines required to manage the state feedback values.
4. For each line, indicate the condition for which the selected image will be displayed.









Save, then exit the edit mode.



To configure 'What I Do':

- Use the top image: widget 1 (all ON)
- Break them down into cells and colour the lights with the colours selected for each light
- In the colour, indicate the action to be performed when clicking, i.e. switch the light.



Widget	Selected state feedback	Machine	'TRUE' image	'FALSE' image
1	<ul style="list-style-type: none"> - 'Wall' light - 'Pool' light - 'Indoors' light 	AND		X
2	<ul style="list-style-type: none"> - 'Pool' light - 'Indoors' light 	AND		X
3	<ul style="list-style-type: none"> - 'Wall' light - 'Indoors' light 	AND		X
4	<ul style="list-style-type: none"> - 'Wall' light - 'Pool' light 	AND		X
5	<ul style="list-style-type: none"> - 'Indoors' light 	AND		X
6	<ul style="list-style-type: none"> - 'Pool' light 	AND		X
7	<ul style="list-style-type: none"> - 'Wall' light 	AND		X
8	<ul style="list-style-type: none"> - 'Wall' light - 'Pool' light - 'Indoors' light 	AND	X	

END OF DOCUMENT