

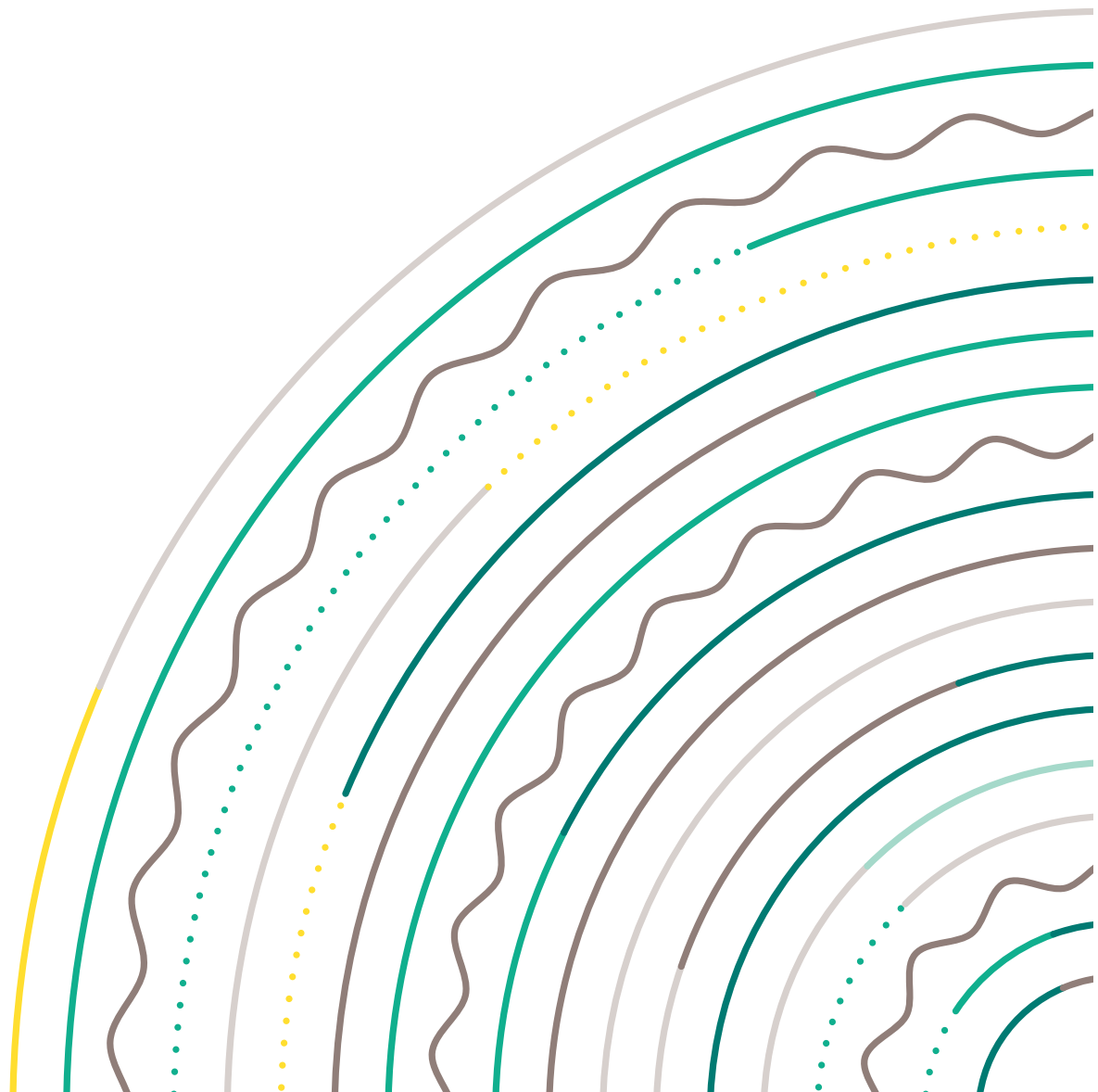


**DELTA
DORE**

Lifedomus

Doorbird

18/09/2018



Contents

1	Introduction	3
1.1	Doorbird door station.....	3
1.2	Limitations.....	3
2	Setup	4
2.1	SIP.....	4
2.2	Doorbird calls.....	5
2.3	Lifedomus	6
2.3.1	Camera	6
2.3.2	Videophone	6
2.4	Interaction with home automation.....	7
2.5	Lock control	7

1 Introduction

1.1 Doorbird door station

The Doorbird door station has its dedicated application and communicates via a cloud server.

Lifedomus will connect to the door station via the door station's SIP setup.

1.2 Limitations

The doorbird can only call one SIP address during a call. As it interfaces in P2P, it can only call one Lifemodus device (iPhone, iPad, Android or server).

The call will be received in the Lifemodus application if it is running and in the foreground.

2 Setup

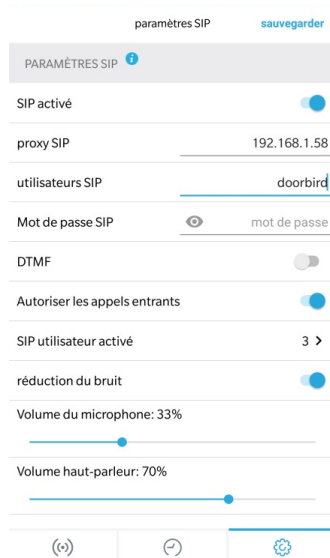
2.1 SIP

Go to the 'SIP settings' menu and activate it.

Enter the SIP proxy with the Doorbird door stations IP address. (Note that it must be fixed, otherwise it will not work).

Enter the SIP users field with the name of your choice. (here 'doorbird').

Check: Authorise incoming calls



Then click on the active user SIP menu.

You can add all the devices that can interact with the door station, namely the Lifemodus server as well as all iPhones, iPads or Android devices. For each one, enter the lifedomus@DEVICE_IP address.

IMPORTANT: the IP address of these devices must be fixed at router level.




Save the information.

2.2 Doorbird calls

In the administration menu, click on the SIP number.

Like in the SIP menu, you can add all the devices that you want to be able to call by giving them a label (useful for subsequent actions), e.g.: Lifemodus Server: lifedomus@SERVER_IP.

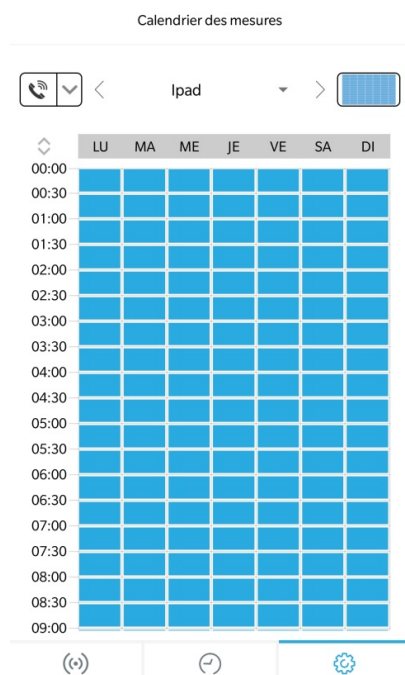


Then go back to the administration menu and go to the 'Doorbell calendar'.

That is where you select who to call in the event of a call on the door station. By default, it is the Doorbird application's push notification calendar that is presented with blue everywhere, namely call in all cases.

On the left a drop-down list is used to select 'SIP call'.

Select in the middle the SIP profile (which device) and colour in blue the periods (or all the period) call this device.



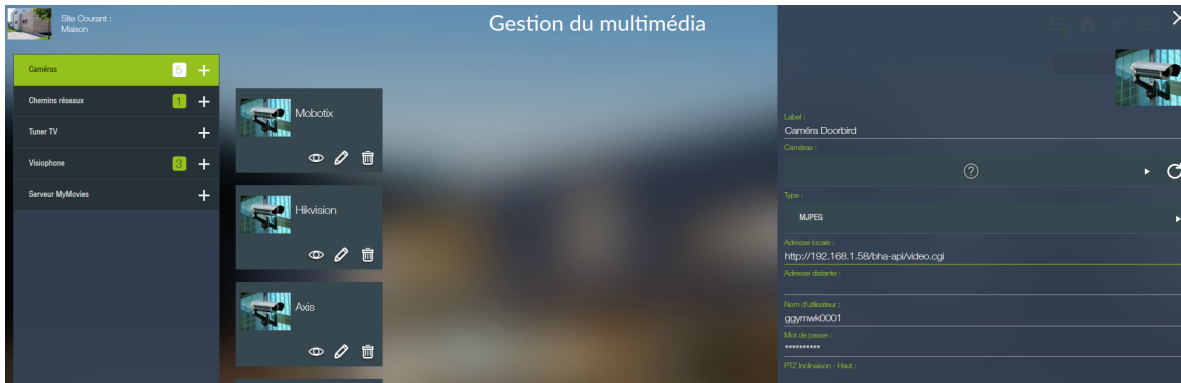
2.3 Lifedomus

2.3.1 Camera

In Config Studio, in the multimedia menu, create a camera to view the door station workflow.

Enter the MJPG type and in URL: http://IP_DU_DOORBIRD/bha-api/video.cgi

Enter the door station's username/password (do not use the admin account).



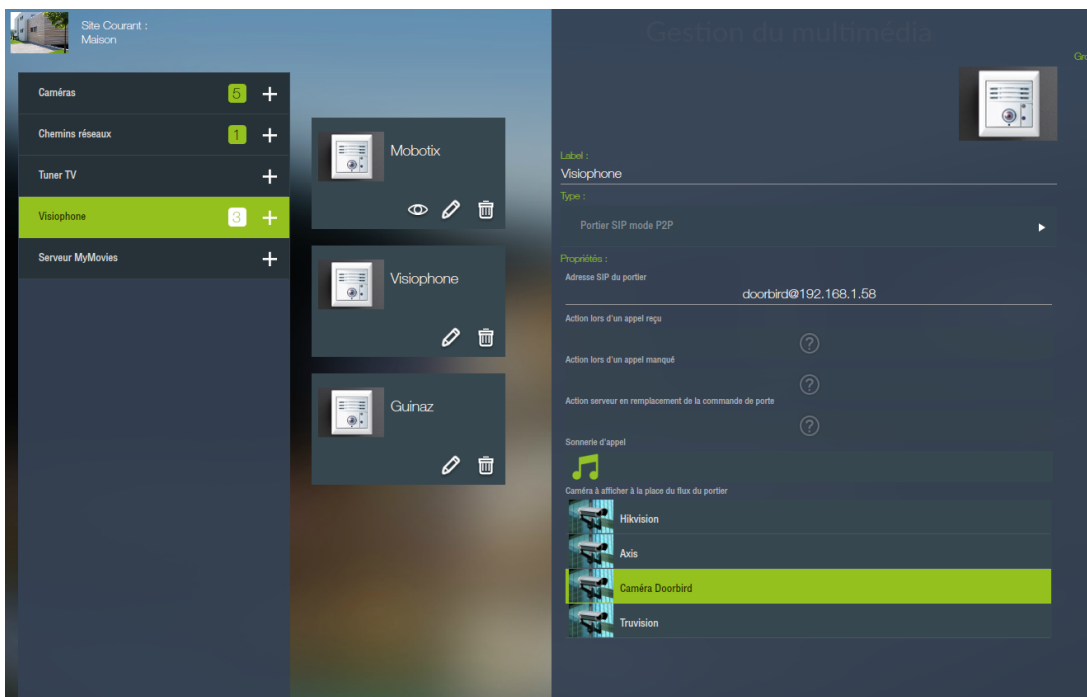
Save and you can test the camera via the eye icon.

2.3.2 Videophone

Still from the multimedia menu, create a videophone of the 'P2P SIP door station'.

An SIP address for the door station, enter the address that depends on the name that you have entered in the previous section, here it is 'doorbird@DOORBIRD:5060_IP'.

At the bottom, there is a camera selection menu. Select the one that you have created earlier.



You can save.

Now on all iPhones, iPads and Android devices, if you go to the videophone tab, you can interface with the Doorbird door station.

IMPORTANT: only the one selected in the doorbell calendar will receive the call.

2.4 Interaction with home automation

You can create a scenario to perform actions during a call on the door station: e.g. make the lights blink, play music on the sound systems, etc.

For this to be possible, the Lifemodus server must be called and not an iOS/Android device in the doorbell calendar.

Then in the videophone setup in CS, you can select a scenario already created in the field below the door station address: 'Action during an incoming call'.

2.5 Lock control

If you want to control the doorbird lock, you must create a universal http connector. (IMPORTANT this requires the 'Advanced connectivity pack' software option)

Create a 'Universal HTTP'.

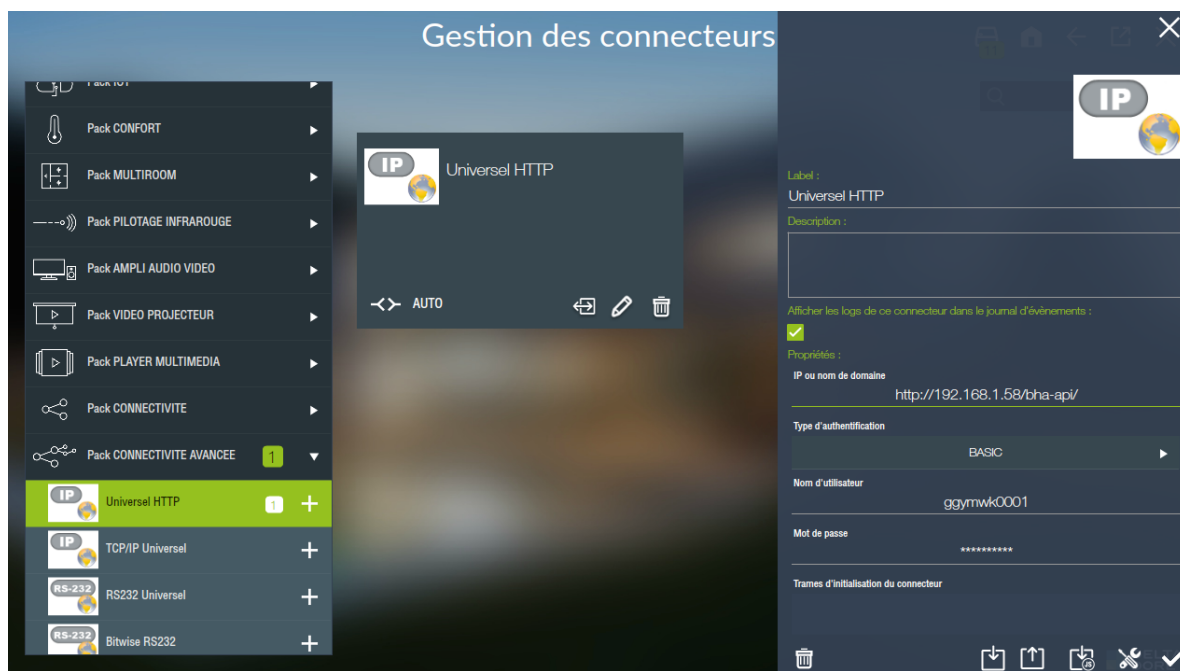
In the connector settings, complete the fields:

IP or domain name: http://IP_DU_DOORBIRD/bha-api/

Authentication type: BASIC

Username: doorbird user profile

Password: user password



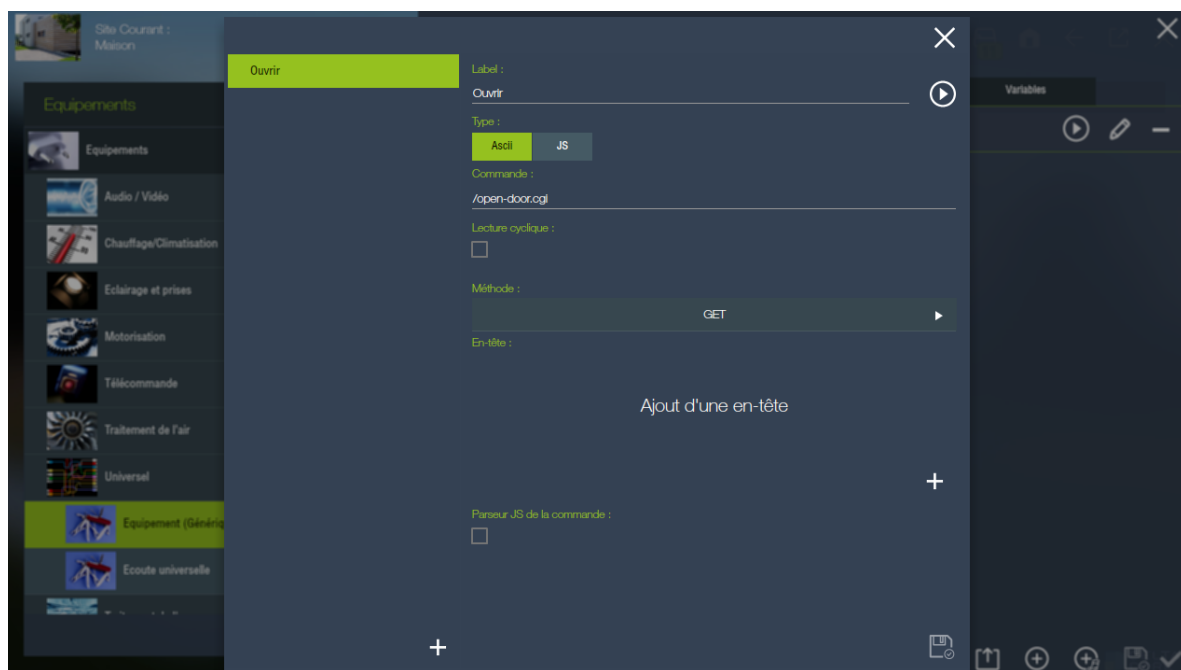
Save the connector should start.

Now go to the device menu and create a Generic device from the tabs: Devices > Universal > Generic device.

Name the 'Lock Control' and assign the Doorbird connector to it.

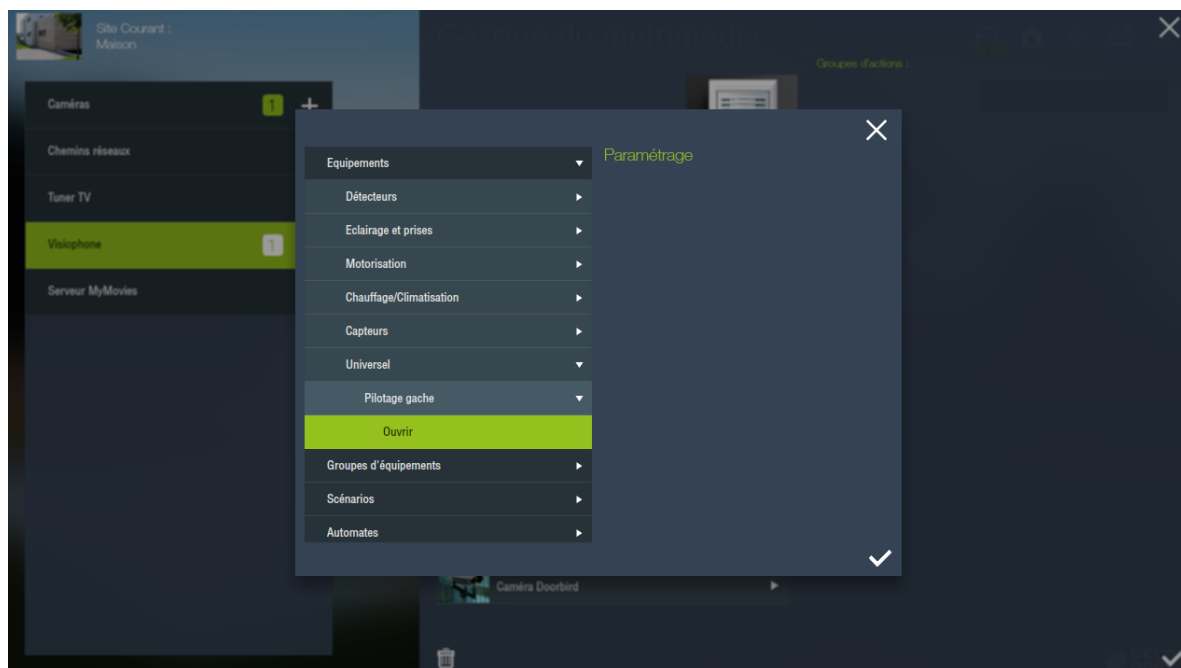
Create a control by pressing the + button below the properties and edit via the pencil icon.

Name it 'Open' leave the ASCII type and enter in control: '/open-door.cgi'



Now go to the multimedia menu and configure the 'Doorbird' videophone.

In the parameters select the fields 'Server action in replacement for the door control'. In the pop-up select the 'Open' action on the 'Lock control' device.



In the door station pop-up in the iOS/Android applications, the door button must now control the Doorbird lock.