

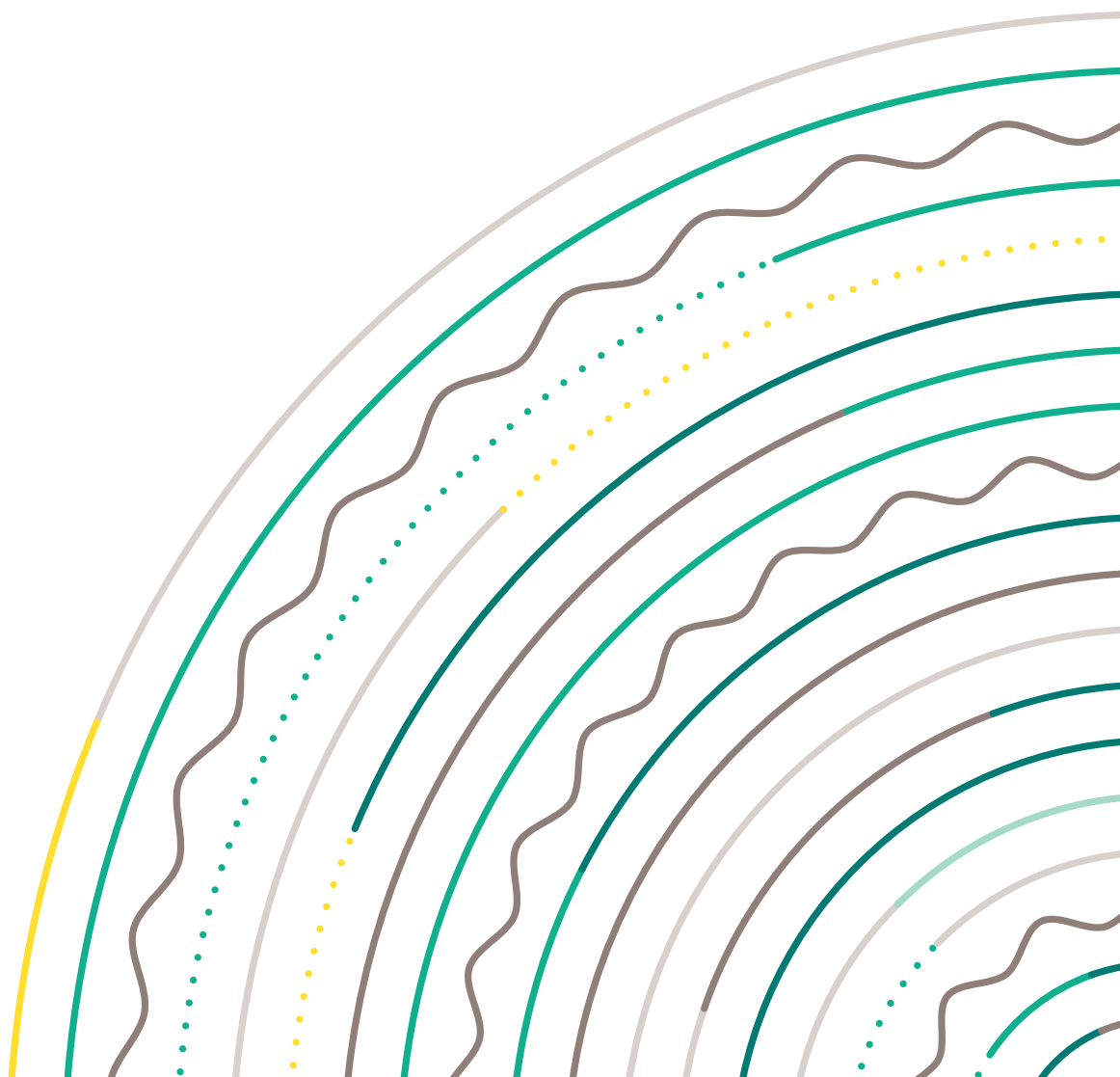


Lifedomus

Dune HD: Setup

30/01/2018

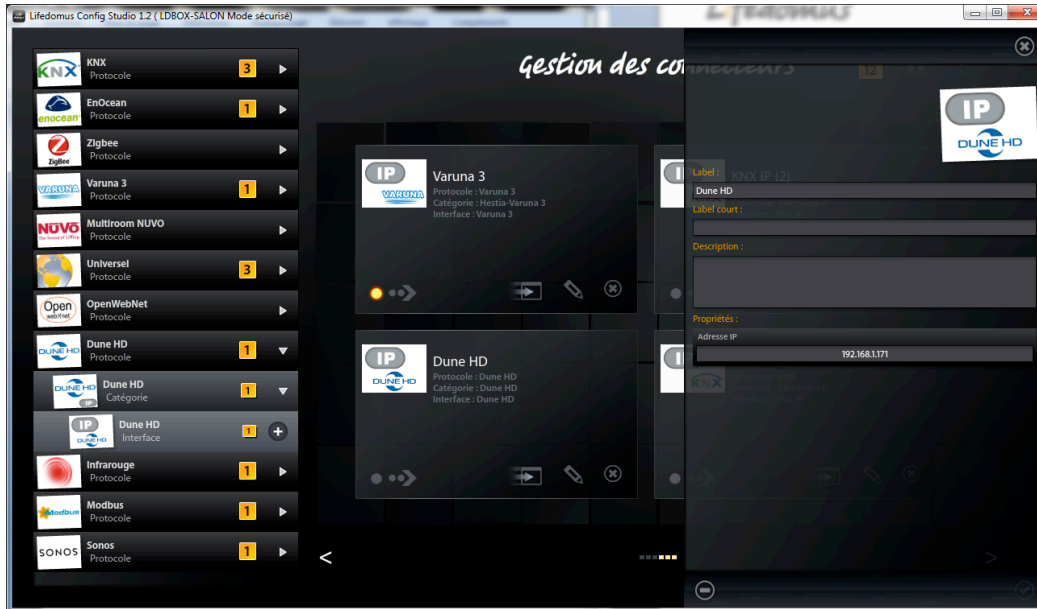
Version 2.1



DUNE HD: Configuration

Connector setup

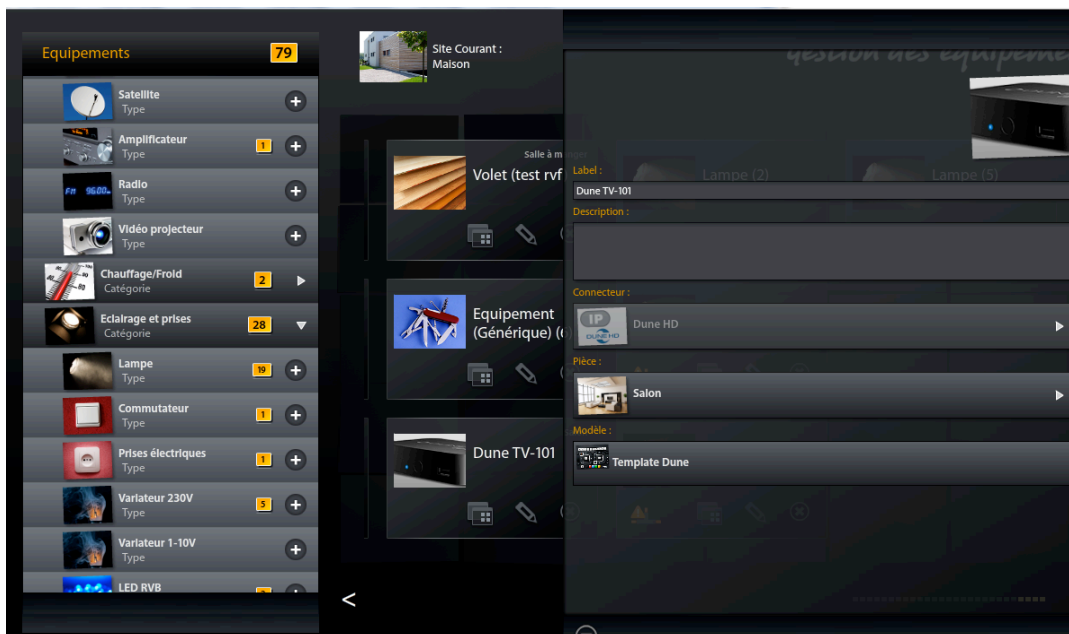
- In the connector management menu, create the 'Dune HD' connector
- Enter the IP address for the DUNE HD device on your network, in the connector's settings.



- Start the connector with the arrow in the bottom left corner of the thumbnail.

Creating the device in the site

- In the device management menu, add the 'Dune TV-101' device in the 'Devices – Audio/Video' category
- In the device settings, select the 'Dune HD' connector and indicate the room where you want it to appear.



Once saved, your device can be controlled via 'Design Studio', iOS and Androïd applications.

You Dune will be controlled in Lifedomus in the same way as with a remote control.

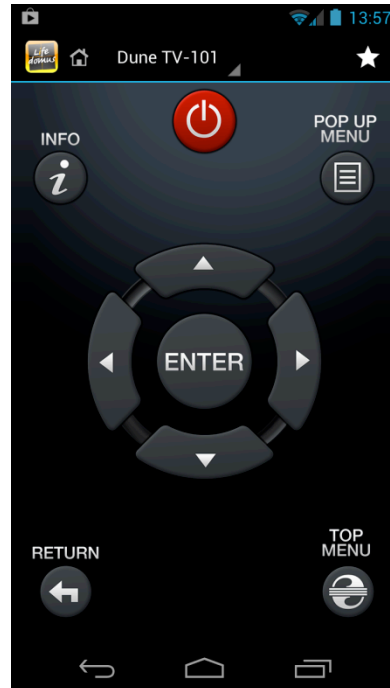
'Design Studio' version



iPhone version

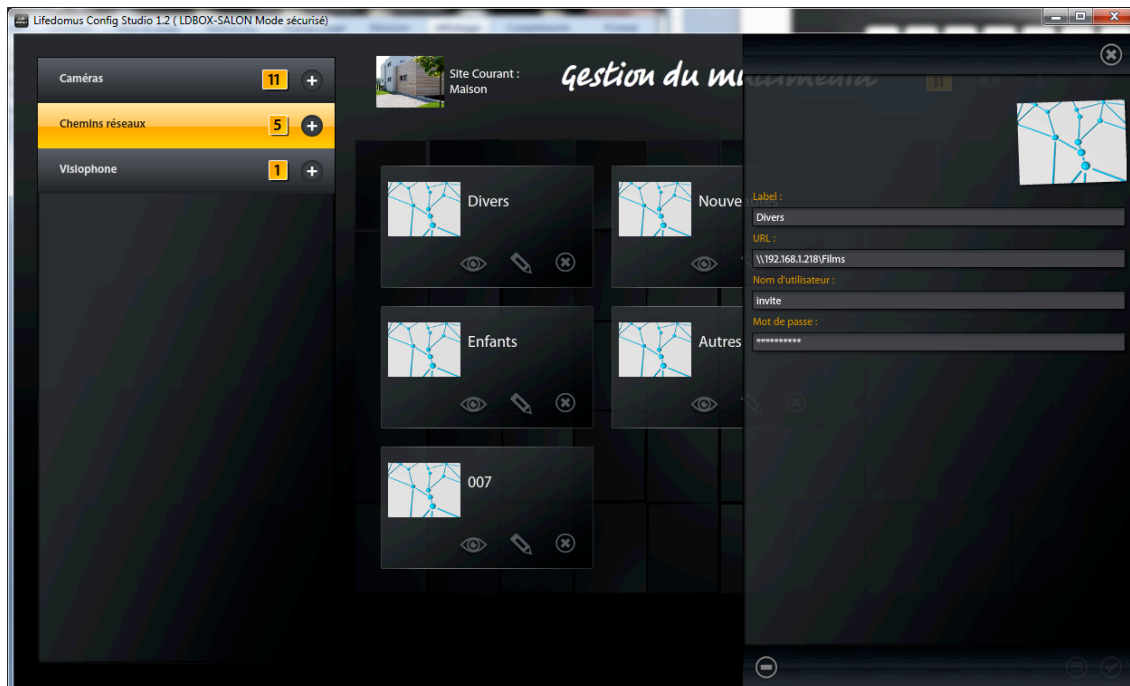


Android version



Watching a film from a network share on your TV with Dune HD and Lifemodus

- In 'Lifedomus CS', create a network path related to the sharing of your network containing the films.

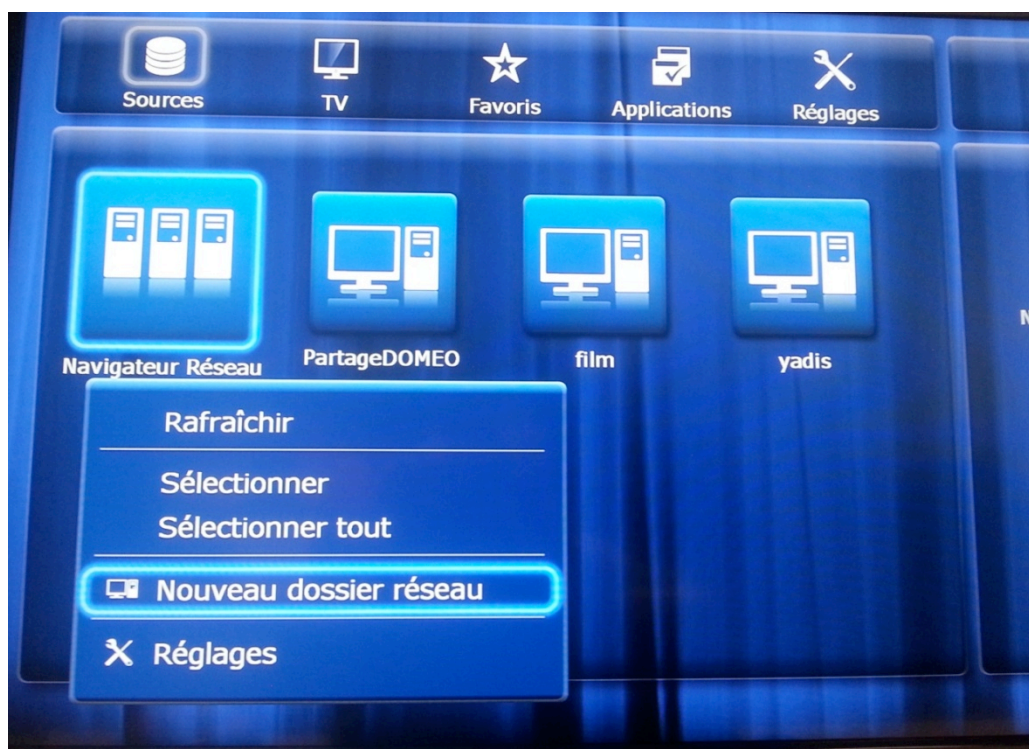


The share URL comprises the following: \\ <server ip address> \ <share name>

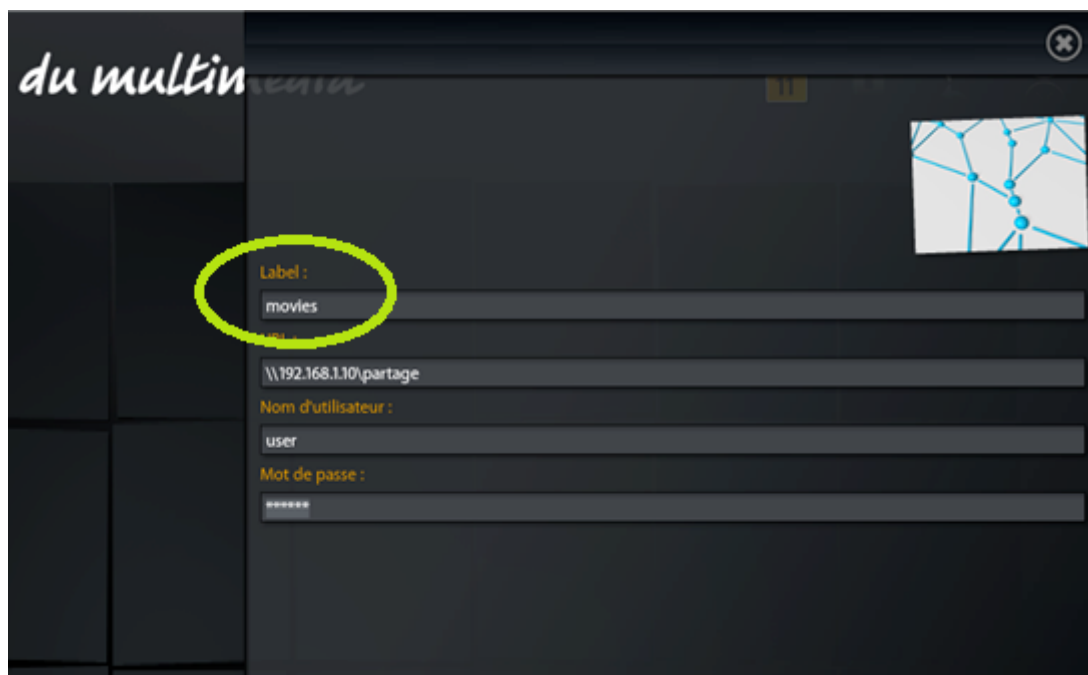
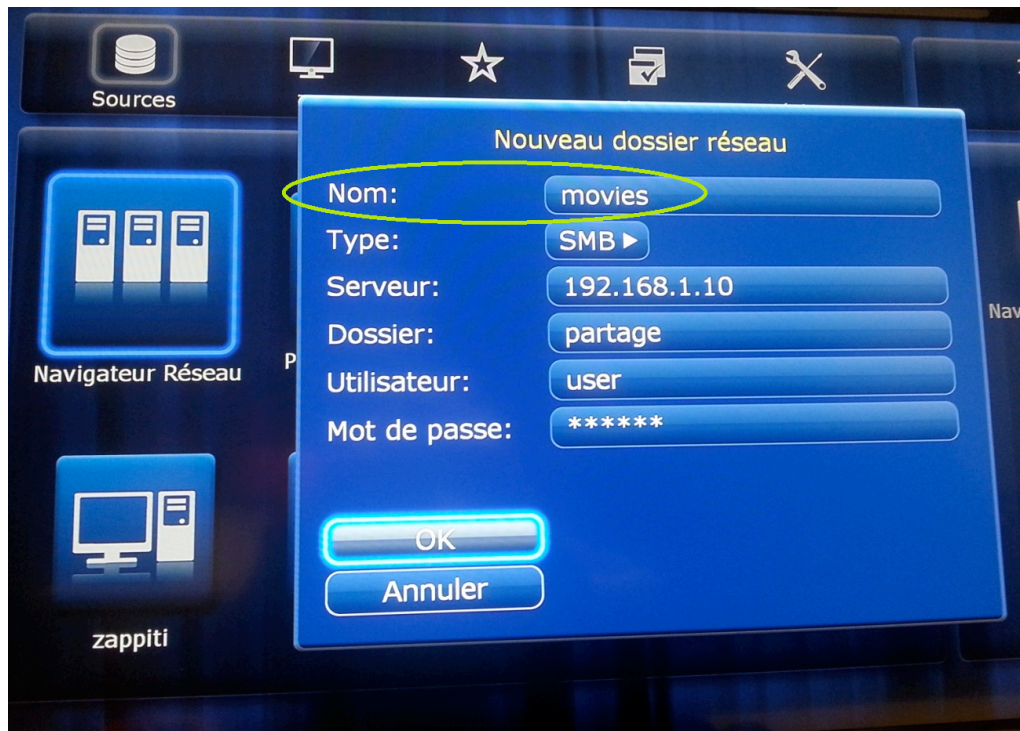
Example: \\192.168.0.42\Films

- If authentication is required**, create the share in the Dune module using its interface. However, if no password is required, it will not be necessary to configure in Dune.

Example for the creation of a network path in Dune:



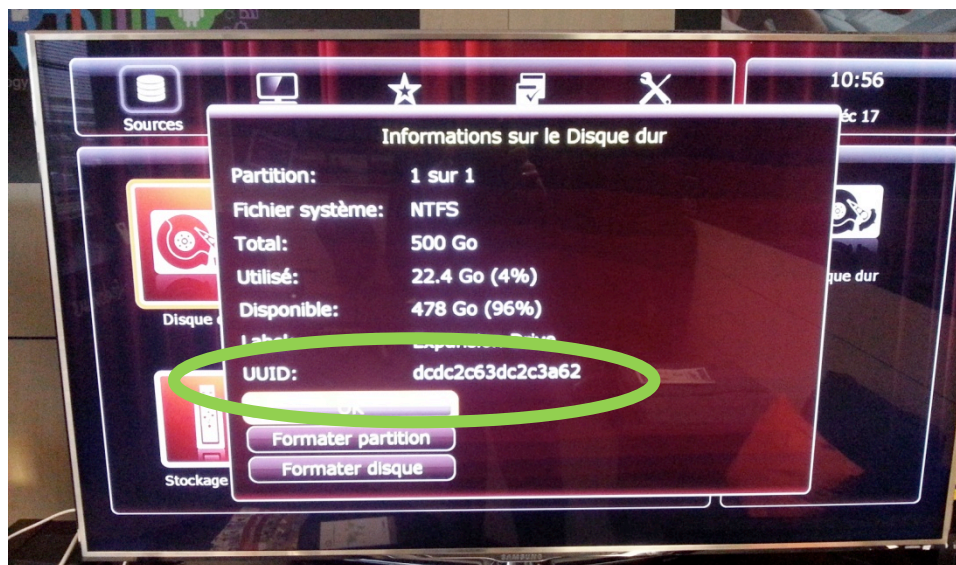
- The network folder name must be the same as the network path label in 'Lifedomus CS'



- **If the network share is an internal hard drive or a drive connected to a Dune drive via USB:**

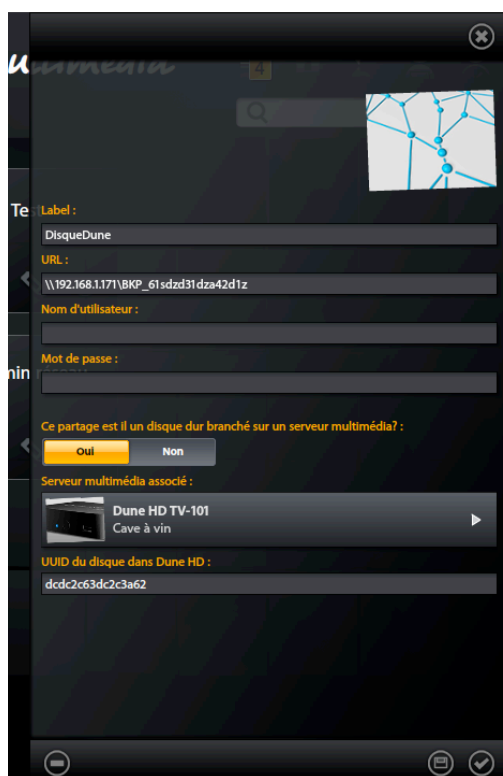
Go to Dune and press the 'popup menu' button by selecting a hard drive, then go to information.

Then note down the UUID:



In Config Studio, tick 'Yes' for 'Is this share a hard drive connected to a multimedia server?'

Select the Dune device to which the hard drive is connected and enter the UUID in Config Studio.



Use this information to prompt the Dune drive on which the drive is connected to locally read the multimedia file instead of using the network path to this file, which in this case could generate lags or make Dune unstable. However, on the other drives, the network path will be used to access the files of this drive.

- In 'Lifedomus DS', you access the Dune remote control with its control in the bottom toolbar.

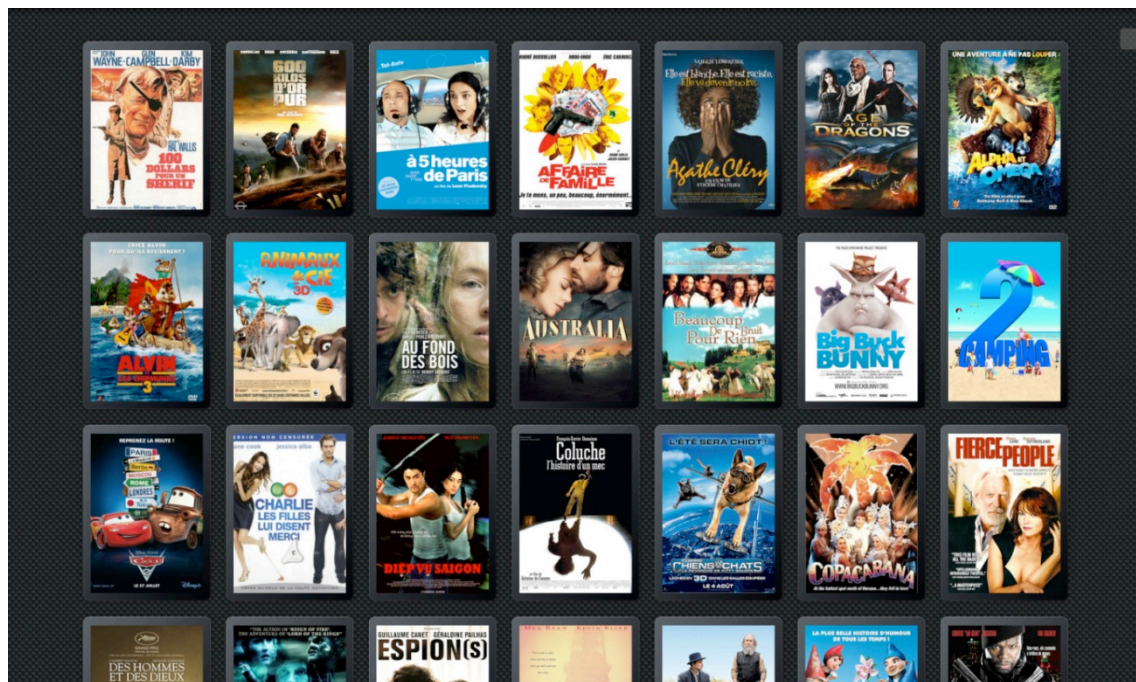


- Use the following button to select a film:
- When running for the first time, you must run a media scan.**



To run a media scan to see the films and details, use in the top right menu toolbar.

- A page with the list of film posters will appear.




- Select a poster to display its details.



- To watch a film on your Dune module, press the play button on the poster.



- At any point in time, you can use a standard film selection version using  in the top right hand menu toolbar.

- You can also choose the position of the poster list using  or  in the menu toolbar.

Watching a film from a MyMovies server on your TV with Dune HD and Lifemodus

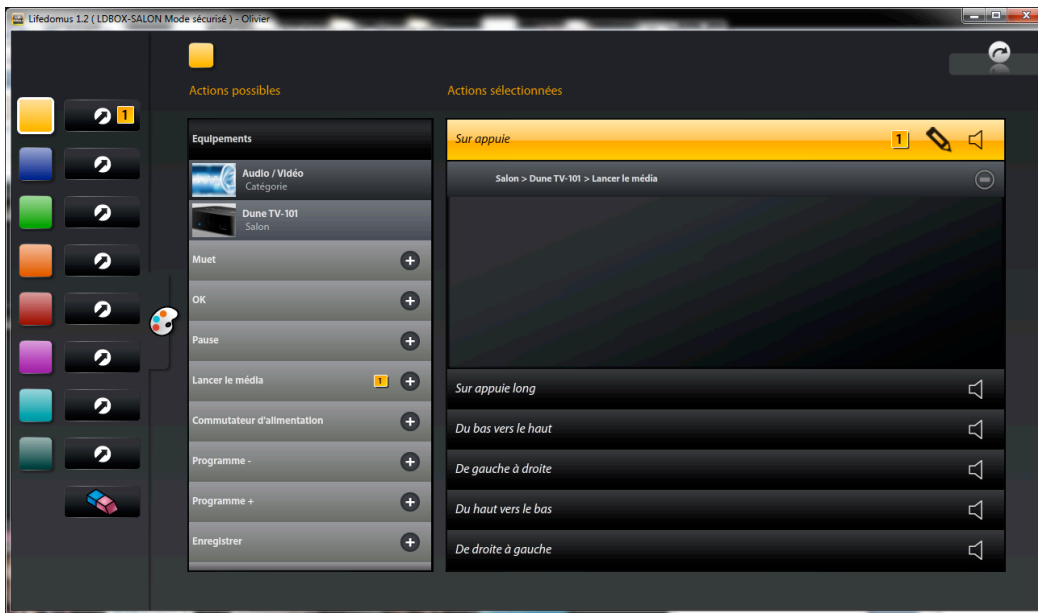
See MyMovies Documentation.

Using Dune device controls from 'Design Studio'

You can also create the control interface or add a widget on a page to control your Dune module.

Use the 'Design Studio's edit mode.

All the controls will appear in your widget's 'What I Do'.



Example:

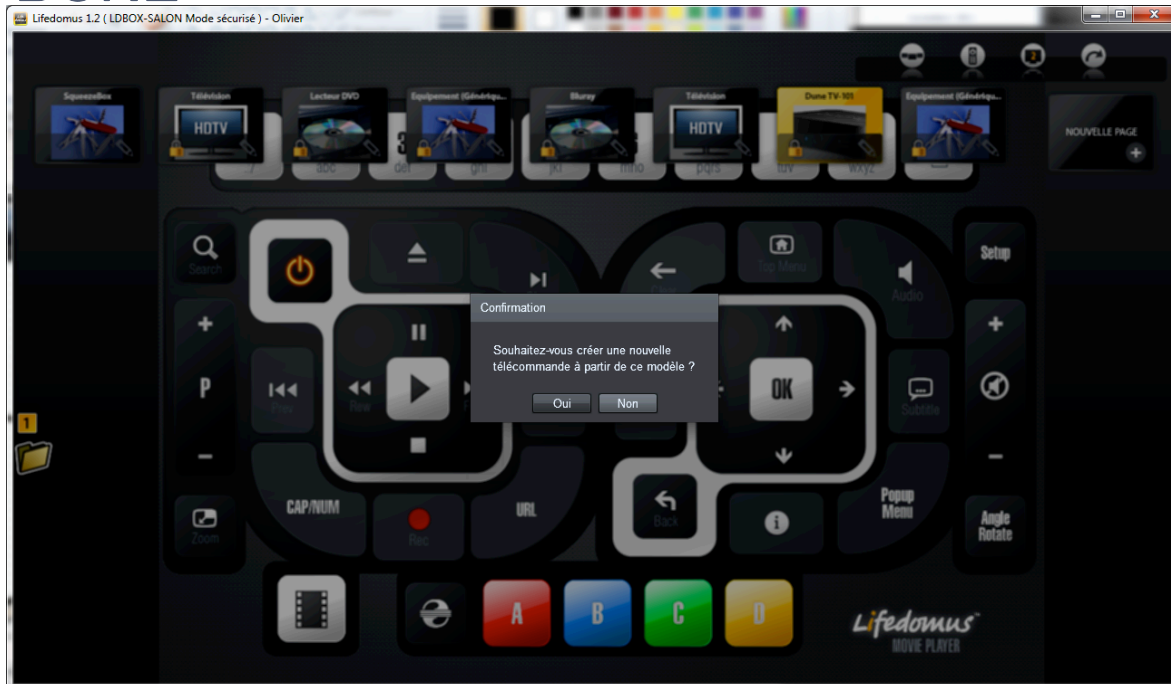
To select a film from the list and run it on the Dune module, use the device's 'Run media' control.

Calling a Dune remote control from a widget

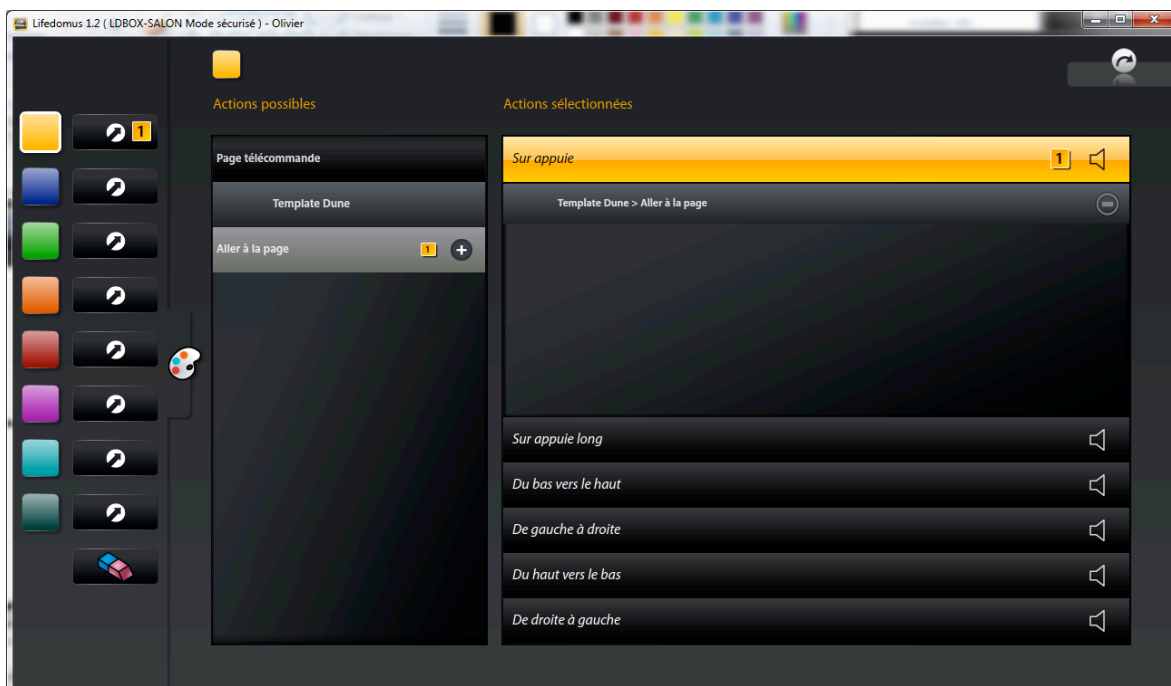
- First of all, create a remote control page from the original remote control. Go to edit mode then display the remote control toolbar (item 1 on the photo). A padlock will appear on your remote control.



- To unlock the remote control, use the pencil (item 2 on the photo) and answer 'Yes'. Wait while the remote control generates (a few minutes).



- You can now add a widget to the navigation page and assign the 'Go to page' command on your remote control from 'What I Do'.



END OF DOCUMENT