

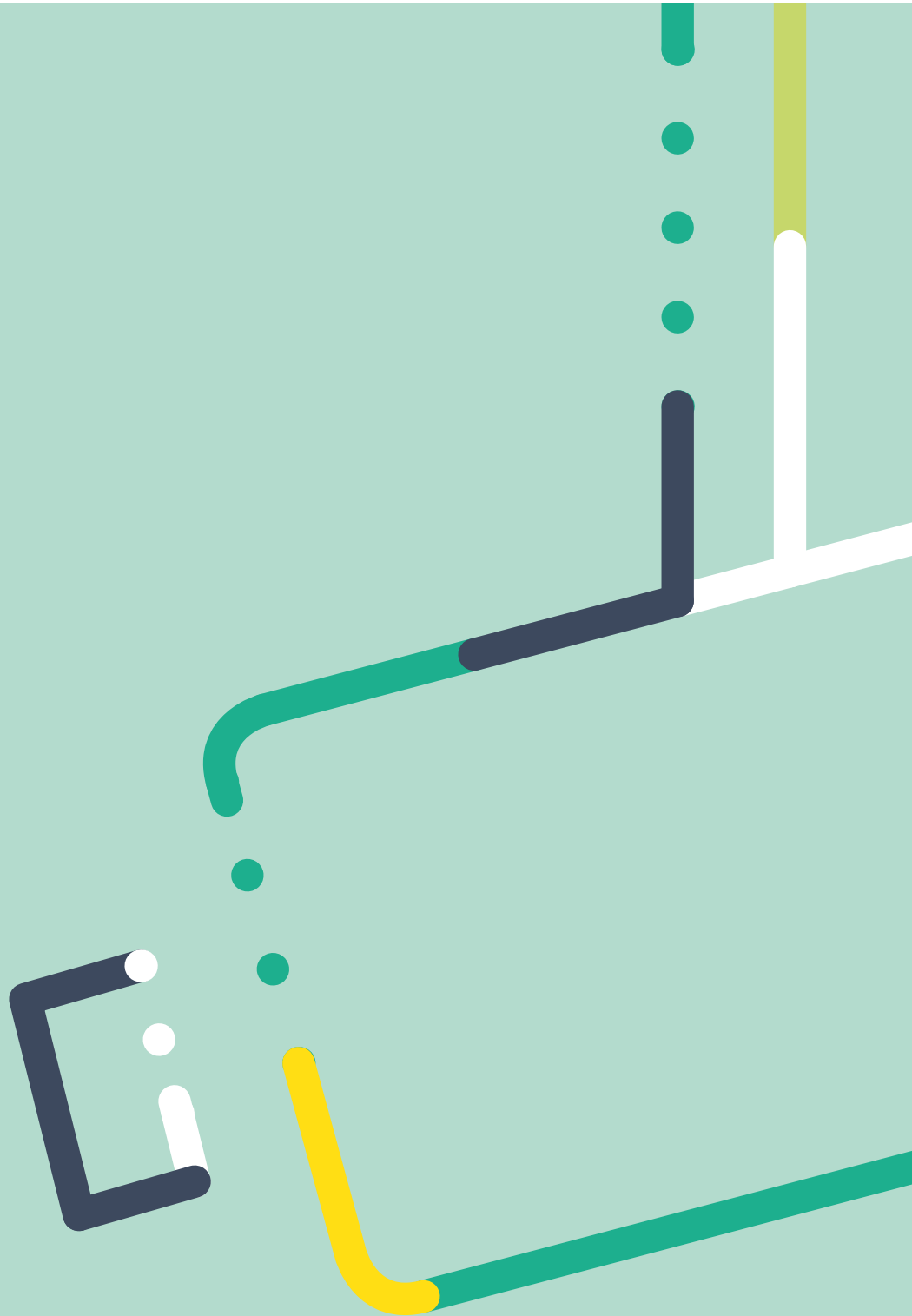


Smart homes, better living

smart

# GUIDE

security



# Our 10 commitments



50 years in existence, 50 years of research, 50 years of French design and manufacture.  
Here's the latest edition of our Security Guide.  
From smart packs to additional sensors, check out our entire range.  
To help you choose, we have described various use cases tailored to the needs of your customers.  
The following pages will explain how our solutions are designed to keep everyone safe.

## Table of Contents smart security

Tydom: Smart Home at your fingertips [p.4](#)  
Security by Delta Dore [p.6](#)  
Use cases [p.8](#)  
Delta Dore also means remote control [p.24](#)  
Delta Dore also means technical detection [p.26](#)  
Index [p.28](#)

01

### A comprehensive range

Control units, remotes, alarms, cameras... To meet the needs of your customers, we are not limited to just a single product range, but rather offer a complete solution to ensure the protection of their home, apartment or business.

02

### New home or renovation

Wireless technology ensures easy integration in all types of homes. What's more, our products can be easily moved to a different place after they've been installed and taken away with you if you move house.

03

### Secure security

Anti-jamming feature included to protect the wireless connection.  
Tamper alert system in case of unwanted product removal.  
Rolling code to prevent it from being reproduced.  
Continuous monitoring by the control unit to ensure a stable connection with the various sensors



04

### Various applications

We help keep your home or business safe and are able to meet sophisticated requests such as securing outside spaces, technical detection, remote control... and many other features.

05

### Ergonomics

Remotes tailored to each family member: indoor and outdoor keypads, keyring remotes, and smartphone control using the Tydom smart home app. We have everything covered.



06

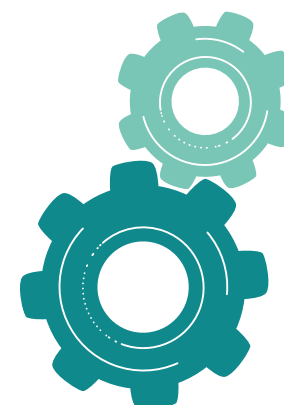
### Energy transition

In our desire to excel, Delta Dore focuses all our skills into providing concrete solutions, adapted to each individual, in order to offer products that reduce their environmental impact as much as possible.

07

### Wireless technology

No wiring necessary, which means that most of what we offer can be installed quickly and easily. Battery power guarantees that the system will function smoothly even in case of a power cut.



08

### Scalability

The alarm system is instantly compatible with other products, depending on how the needs of your customers change and whether they require a new sensor, camera or otherwise.



09

### Reliable

Over 10 million sensors have been installed all over Europe, proof of the trust our products inspire.



10

### Smart security

Our security products are easy to manage both locally or remotely. Users can activate or deactivate the alarm remotely, look inside their home or around their property, and receive alerts on their smartphone if an alarm goes off.



Our training staff are specialist technicians who are renowned within the fields of smart home, security, heating and multimedia. Their knowledge and their experience of the field make them qualified contact partners. They will understand your needs (electrical norms, heating regulations, labelling, technologies...)

They will therefore be able to help you work with peace of mind, in accordance with industry and safety regulations.  
Please use the contact details 020 7660 2919 or <https://www.eventbrite.co.uk/o/delta-dore-21618188391> (online training)



Discover all of the latest exclusive news relating to our smart home solutions, **videos and tutorials**, news from our partner bloggers, our new services, and also the dates of our next trade shows, our partnerships...



Follow us on the social networks!



## Tydom: Home at your fingertips

User-friendly for everyone, Tydom helps you control your lighting, shutters, gates, garage door and even your heating and alarm whether you're at home or away.

The application can be customised using the photo mode to control each piece of equipment by clicking on the corresponding images.

### Examples of features:

- Turning lights on and off (compatibility with bulbs and connected sockets using the Zigbee protocol)
- Opening and closing roller shutters, awnings and garage doors
- Adjusting the temperature in the home
- Activating and deactivating the alarm
- Staying alerted in the event of detection
- Monitoring the home and exterior via internal and external video camera feeds
- Programming scenarios
- Using scenarios to simplify daily events
- Monitoring energy consumption in the home

## Tydom, a simple and intuitive app for smart homes



Download on the  
App Store

GET IT ON  
Google Play

The Tydom application is free, secure and does not require a subscription.

## Your voice-controlled home

Most of our products are compatible with Amazon Alexa and Google Assistant.







## Detect

Sensitive areas must be secured: windows, front door, garage, etc.

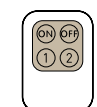
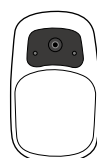
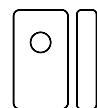
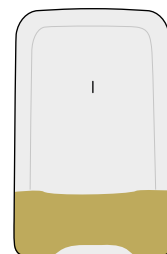
Detection also involves preventing domestic hazards, such as smoke, power cuts and leaks.

## Centralise

The control unit is the cornerstone of the alarm system: it communicates with all the system sensors. It receives information from them and acts as necessary by triggering alerts through its siren and sharing information depending on the notification mode selected.

## Alert

When a sensor sends an alert to the control unit, the alert must be issued as quickly as possible: it can be in the form of an audible alert via the indoor and/or outdoor sirens, a visual warning through flashing lights, or communicated over a phone call, SMS and/or smartphone notification.



SMART



SECURITY



## Monitor

Wherever you are, and especially when you're not home, it's reassuring to be able to check that everything's in order.

Like keeping an eye on your house...

And that eye is the camera. Installed indoors or outside, it allows you to view your home at any time, day or night.

## Control

All the alarm's control settings are centralised on an internal touchscreen keypad.

There are also simple keypads, keypads for indoor and outdoor use, badge reader keypads, and keyfob remotes that easily fit on your keys

And don't forget your smartphone, which can become the alarm's remote control.

Security  
by Delta Dore

security

# SCOPE

alarm and alert

- 
- p.10** I want to protect my main home
  - p.12** I want to secure my holiday home, my mobile home, my boat, etc.
  - p.14** I want to protect my business premises and be able to monitor them at anytime
  - p.16** I want to secure my shed located at the back of my garden
  - p.18** I want to secure the perimeter of my property
  - p.20** I want to feel safe when I'm home
  - p.22** Controls tailored for everyone and every purpose

# I want to protect my main home



## OUR SOLUTION

Everyone wants to know that their loved ones and valuables are safe. To this end, we offer several solutions in order adapt to the configuration of each home and the lifestyle of its occupants. Packs are available, as well as additional products to complete your installation. Whatever you begin with, it's easy to add to your installation over time. NB: When you activate the Family Care alert, it will send a notification via the Tydom app to warn you that a person using the remote control has turned the alarm on or off.



### The advantages of the smart home

Easy to associate with the Tydom smart home hub. Local or remote: control the system and receive feedback to ensure that your request has been executed correctly. Immediate alerts to ensure that you can take action wherever you are. Our solution is scalable and helps control other areas of the home depending on the installation: heating, indoor and outdoor lighting, roller shutters, windows and doors, and other intelligent actions.

# installation for a smart home

## Smart wireless 8-zone alarm pack



Wireless Tyxal+ pack  
Ref. 6410168

- Contains:
- 1 siren alarm control unit with up to 8 independent zones CS 8000
  - 2 infrared presence detectors (compatible with pets) DMB
  - 1 central touchscreen keypad CLT 8000
  - 2 keyring controller keyfob to activate and deactivate the alarm system + managing control devices (lighting, windows and doors, roller shutters, etc.) TL 2000

## Connected cameras

Synchronisation of the Tyxal+ alarm and the Tycam cameras in a single action



Tycam 1100 Indoor  
Ref. 6417006  
To be linked to a Tydom Home, Pro or 2.O smart home hub

- Connected indoor camera
- Fitted with integrated double detection (motion and video), nothing escapes the camera's field of vision (range 10 m - wide angle 130°). It automatically sends an alert including a video to your smartphone and triggers the alarm siren.
  - 24/7 monitoring



Tycam 2100 Outdoor  
Ref. 6417007  
To be linked to a Tydom Home, Pro or 2.O smart home hub

- Smart outdoor camera
- Day or night, you are guaranteed to have a perfect view of whatever is happening outside your home thanks to the camera's long visual range (range 30 m - wide angle 130°), even in complete darkness.
  - Notification on your smartphone in the event of an alert: effective prevention well ahead of any attempt to break into your premises.

## Good to know

There is also a wireless dual technology dual lens motion detector. It combines infrared detection with microwave frequency, which makes it the perfect product to protect sensitive, ventilated and air-conditioned areas.



Dual lens motion detector  
DMBD  
Ref. 6412311

## Smart home option



Smart Home Hub (plug & play)  
Tydom Home  
Réf. 6700119  
To be linked to a Tyxal+ alarm control unit of the 8-zone wireless alarm pack



Smart Home Hub (consumer unit)  
Tydom Pro  
Réf. 6700117  
To be linked to a Tyxal+ alarm control unit of the 8-zone wireless alarm pack  
Option Tydom Pro  
External antenna X3D Zigbee - Réf 6700118

Local and remote control from the free Tydom application



I want to secure my secondary residence,  
my mobile home, my boat, etc.



# OUR SOLUTION

It's important to be reassured by knowing that your valuables are protected when you're far away. Extremely simple measures can be put in place. They don't require any wiring, and they help you stay connected and informed about any break-in attempts or incidents at home such as fires. In such cases, an alert is sent immediately to the owner's smartphone so that they can take action as soon as possible.

If you opt for a Tyxal+ alarm pack with telephone transmitter, the option to alert loved ones by text message can be activated. The alert sends a text message if the alarm is activated or deactivated by a person who has a remote control.



## The advantages of the smart home

- Easy to link the products to the Tydom smart home hub
- On site or remotely: the owner is always connected to the premises to be protected and can react immediately based on the information sent.
- Our solution is scalable and helps control other areas of the home depending on the installation: heating, indoor and outdoor lighting, roller shutters, windows and doors, and other intelligent actions.

## installation for a smart home

### Wireless 2-zone alarm pack



Tyxal+ Access pack  
Ref. 6410186

- Contains:
- 1 siren alarm control unit with 1 or 2 independent zones CS 2000
  - 1 infrared detector that alerts to motion in the room DMB
  - 1 door/window magnetic contact to protect exists (front door, window, etc.) DO BL
  - 1 centralised command keypad with touchscreen CLT 8000
  - 2 keyring controller keypads for turning the system on and off + possibility to manage various automated actions (lighting, windows and doors, roller shutters, etc.) TL 2000

### Wireless smoke detector



DRF  
Ref. 6412313

- Works in autonomous mode to warn occupants with its built-in siren
- Compatible with a Tyxal+ alarm control unit or a telephone transmitter to share information remotely
- Can be linked to roller shutters and lights to make it easier for occupants to evacuate the premises if needed

### Smart home option



Smart Home Hub (plug & play)  
**Tydom Home**  
Réf. 6700119  
To be linked to a Tyxal+ alarm control unit of the 8-zone wireless alarm pack



Smart Home Hub (consumer unit)  
**Tydom Pro**  
Réf. 6700117  
To be linked to a Tyxal+ alarm control unit of the 8-zone wireless alarm pack  
*Option Tydom Pro*  
**External antenna X3D Zigbee** - Réf 6700118

Local and remote control from the free Tydom application

### Good to know

There are wireless door/window magnetic sensors of various sizes (98 or 52 mm high), they can even be directly embedded into a PVC window. They are available in various colours (white, brown, grey).

I want to protect my business premises  
and be able to monitor them at any time



# OUR SOLUTION

Damage to a workplace can lead to losses for the business, not to mention any injuries suffered as a result. Various options are available to monitor the premises remotely and remain fully in control. NB: When you activate the Family Care alert, it will send a notification via the Tydom app to warn you that a person using the remote control has turned the alarm on or off. Another option: An alert that sends a text message to loved ones if the alarm is activated or disabled by a person who has a badge or a remote control.



## The advantages of the smart home

Easy to link the products to the Tydom smart home hub

On site or remotely: nothing will escape the attention of the property owner, who is immediately informed about anything unusual. The system also makes it easy to quickly glance at your premises or listen to what's happening there if you need reassurance.

Our solution is scalable and helps control other areas of the home depending on the installation: heating, indoor and outdoor lighting, roller shutters, windows and doors, and other intelligent actions.

## installation for a smart home

### Wireless alarm packs



Wireless Tyxal+ pack  
Ref. 6410168

- Contains:
- 1 siren alarm control unit with up to 8 independent zones CS 8000
  - 2 infrared presence detectors (compatible with pets) DMB
  - 1 centralised command keypad with touchscreen CLT 8000
  - 2 keyring controller keyfob to activate and deactivate the alarm system + managing control devices (lighting, windows and doors, roller shutters, etc.) TL 2000



Wireless video Tydom pack  
Ref. 6410174

- Contains:
- 1 smart home hub with a Tydom 2.O GSM telephone transmitter to control the installation remotely and be alerted in the event of a break-in attempt, removing doubt through a short video clip
  - 1 video detector to remove doubt DMBV

### Good to know



Wireless curtain detector  
DMDR  
Ref. 6412317

The detection serves several purposes: the detector protects exits you might want to keep open, such as doors and large windows. It can also help keep valuables safe.



Wireless impact detector  
DCP  
Ref. 6412301

Attached to a shop or conservatory window, it detects any abnormal impact and immediately notifies the user.

### Other features



Wireless badge reader  
LB 2000  
Ref. 6413254

Enables the system to activate or deactivate with badges



Wireless indoor touchpad  
CLS 8000  
Ref. 6413253

- Activates or deactivates up to 8 zones of the alarm system
- 10 user codes



Wireless outdoor touchpad  
CLE 8000  
Ref. 6413255

Activates or deactivates up to 8 zones of the alarm system and controls 2 chosen automated actions (lighting, gate, roller shutters, etc.).



Smart outdoor camera  
Tycam 2100 Outdoor  
Ref. 6417007  
To be linked to a Tydom Home, Pro or 2.O smart home hub

- Synchronisation of the Tyxal+ alarm and the Tycam cameras in a single action
- Day or night, you are guaranteed to have a perfect view of whatever is happening outside your home thanks to the camera's long visual range (range 30 m - wide angle 130°), even in complete darkness.
- Notification on your smartphone in the event of an alert: effective prevention well ahead of any attempt to break into your premises.



# I want to secure the shed located at the back of my garden



## OUR SOLUTION

Sleeping in your shed to keep an eye on your mower and DIY tools – sure, why not? But there's a better way. Whether you worry about the safety of your loved ones and have a Tyxal+ security system or have yet to acquire an alarm system, you're spoilt for choice when it comes to protecting your valuables and sleeping soundly. NB: Depending on the equipment you choose, when you activate the Family Care alert, it will send a notification via the Tydom app to warn you that a person using the remote control has turned the alarm on or off. Alternatively, you can activate the option to notify loved ones by text message. The alert sends a text message if the alarm is activated or deactivated by a person who has a badge or a remote control.



### The advantages of the smart home

Easy to link the products to the Tydom smart home hub  
On site or remotely: no need to move from where you are to ensure that your belongings are safe. At the first sign of intrusion, a notification is sent to your smartphone.  
Our solution is scalable and helps control other areas of the home depending on the installation: heating, indoor and outdoor lighting, roller shutters, windows and doors, and other intelligent actions.

## installation for a smart home

### Already fitted with a wireless Tyxal+ pack



Tyxal+ Access pack  
Ref. 6410186  
see details on page 13

or



Wireless Tyxal+ pack  
Ref. 6410168  
see details on page 11

Depending on the model, a control unit can manage 2 to 8 different zones.

- 1 zone can be dedicated to the shed to protect it against break-in attempts
- 1 door/window magnetic contact to protect the door DO BL (available in white, brown or grey or in a smaller version)

### Other options



Smart indoor camera  
Tycam 1100 Indoor  
Ref. 6417006  
To be linked to a Tydom Home, Pro or 2.O smart home hub

- Synchronisation of the Tyxal+ alarm and the Tycam cameras in a single action
- Fitted with integrated double detection (motion and video), nothing escapes the camera's field of vision (range 10 m - wide angle 130°). It automatically sends an alert including a video to your smartphone and triggers the alarm siren.
- 24/7 monitoring



Smart Home Hub (plug & play)  
Tydom Home  
Réf. 6700119  
To be linked to a Tyxal+ alarm control unit of the alarm pack



Smart Home Hub (consumer unit)  
Tydom Pro  
Réf. 6700117  
To be linked to a Tyxal+ alarm control unit of the alarm pack  
Option Tydom Pro  
External antenna X3D Zigbee - Réf 6700118

Local and remote control from the free Tydom application



Smart outdoor camera  
Tycam 2100 Outdoor  
Ref. 6417007  
To be linked to a Tydom Home, Pro or 2.O smart home hub

- Synchronisation of the Tyxal+ alarm and the Tycam cameras in a single action
- Day or night, you are guaranteed to have a perfect view of whatever is happening outside your home thanks to the camera's long visual range (range 30 m - wide angle 130°), even in complete darkness.
- Notification on your smartphone in the event of an alert: effective prevention well ahead of any attempt to break into your premises.

### Good to know



Wireless magnetic garage door contact  
DOS Tyxal+  
Ref. 6412300

To protect the garage door, a specific wireless detector identifies any attempts to open it and sends a signal to the control unit.

# I want to secure the area surrounding my property



## OUR SOLUTION

Protects the surroundings of your property by creating a protective barrier to prevent various types of damage. The barrier acts as a deterrent for anyone who might want to attempt to break into the property.



### The advantages of the smart home

Easy to link the products to the Tydom smart home hub

On site or remotely: the deterrent effect of outdoor protection combined with a smart home app means that you can see what's happening in your garden, day and night, and enjoy peace of mind.

Our solution is scalable and helps control other areas of the home depending on the installation: heating, indoor and outdoor lighting, roller shutters, windows and doors, and other intelligent actions.

## installation for a smart home

### Smart outdoor camera



**Tycam 2100 Outdoor**  
Ref. 6417007  
To be linked to a Tydom Home, Pro or 2.O smart home hub

- Day or night, you are guaranteed to have a perfect view of whatever is happening outside your home thanks to the camera's long visual range (range 30 m - wide angle 130°), even in complete darkness.
- Notification on your smartphone in the event of an alert: effective prevention well ahead of any attempt to break into your premises.

### Smart Home Hub



**Smart Home Hub (plug & play)**  
**Tydom Home**  
Réf. 6700119  
To be linked to the camera



**Smart Home Hub (consumer unit)**  
**Tydom Pro**  
Réf. 6700117  
To be linked to the camera

Option Tydom Pro  
**External antenna X3D Zigbee** - Réf 6700118

Local and remote control from the free Tydom application

### Other options are available with radio outdoor protections



**Outdoor volumetric protection**  
**DME90 Tyxal+**  
Réf. 6412321

Adjustable detection range and angle:  
up to 12 m and max. 90°



**Outdoor protective barrier**  
**DMF Tyxal+**  
Réf. 6412322

Two detection zones (right and left), max. range of 2x12 m (depending on temperature conditions) and independently configurable



**Wide angle volumetric outdoor protection**  
**DME180 Tyxal+**  
Réf. 6412323

Adjustable detection range and angle:  
up to 12 m and max. 180°

I want to feel safe  
while at home



# OUR SOLUTION

Unfortunately, break-ins often happen when the owners are home.  
As such, it is key to feel calm thanks to tailored protection that means you can live in your home with peace of mind.



## The advantages of the smart home

Easy to link the products to the Tydom smart home hub

On site or remotely: even at home, it is reassuring to be able to easily manage solutions from one app. It means that you can check that your system is operational at any time.

Our solution is scalable and helps control other areas of the home depending on the installation: heating, indoor and outdoor lighting, roller shutters, windows and doors, and other intelligent actions.

## installation for a smart home

### Perimeter detection connected to the Tyxal+ alarm control unit

Different types of sensors in different formats protect the house's exits (doors and windows)



Wireless door/window magnetic contact  
DO BL  
Ref. 64 12288  
Available in white, brown, grey

Height 98 mm



Wireless door/window magnetic  
micro-sensor  
MDO GR  
Ref. 64 12307  
Available in white, brown, grey

Height 52 mm



Built-in wireless detector  
DOI PVC  
Ref. 64 12308

For PVC windows



Specific wireless detector for open exits  
DMDR BL  
Ref. 64 12317  
Available in white, brown, grey

It secures exits you may want to keep open, such as doors and large windows.

### Good to know

Combinations of products that communicate with each other ensure additional protection.  
Sensors can be linked to non-motorised roller shutters to warn the control unit if there is an attempt to lift the shutter.  
DVR

You can also consider linking a Tyxia on/off receiver to specific lights and the Tyxal+ alarm. If needed, the control unit will send the command to turn all the lights on.

### Smart home option



Smart Home Hub (plug & play)  
Tydom Home  
Réf. 6700119  
To be linked to a Tyxal+ alarm control unit of the alarm pack

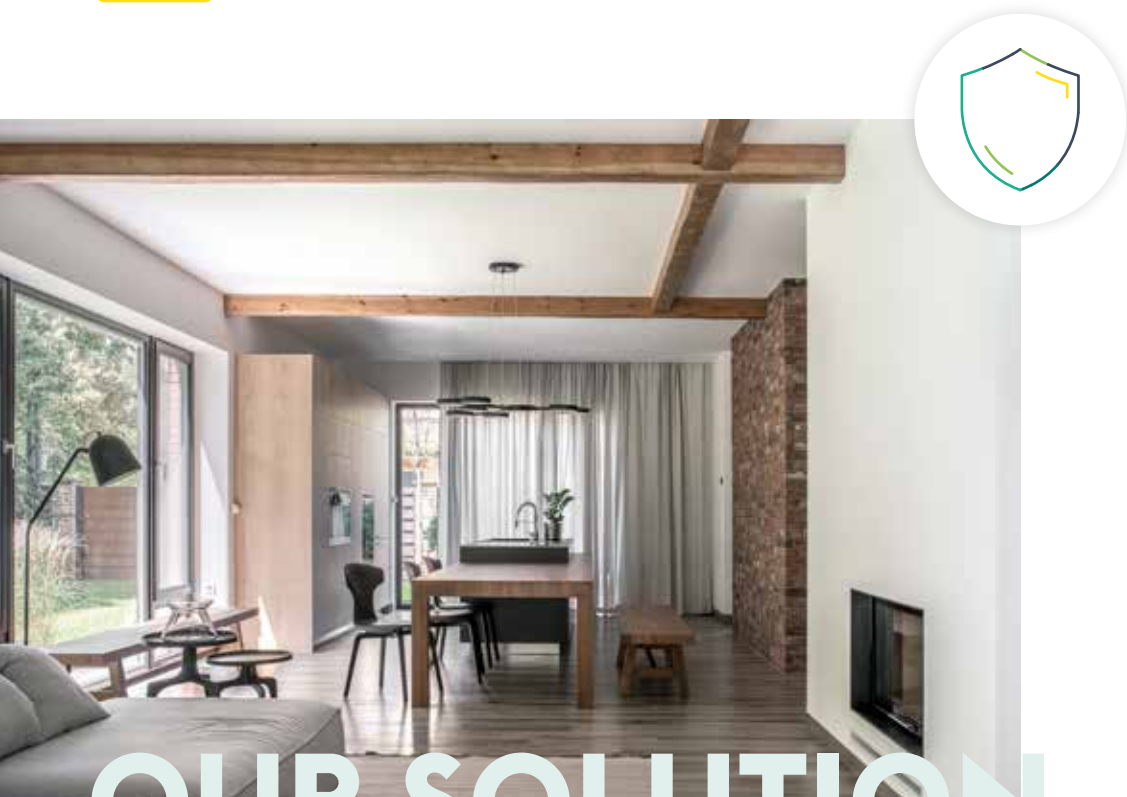


Smart Home Hub (consumer unit)  
Tydom Pro  
Réf. 6700117  
To be linked to a Tyxal+ alarm control unit of the alarm pack  
Option Tydom Pro  
External antenna X3D Zigbee - Réf 6700118

Local and remote control from the free Tydom application



# Controls tailored to each individual and every application



## OUR SOLUTION

The Tyxal+ alarm system is designed to protect every single family member. This means that adults and children alike will need to use the system at one point or another, even if it's only to enter or leave the house. People who aren't members of your household may also need to come and go occasionally. That is why it is necessary to tailor commands to how each person needs to use the system.



### The advantages of the smart home

Easy to link the products to the Tydom smart home hub

On site or remotely: highly practical. For everyone in your household, your smartphones will become remote controls for the alarm, with alerts sent to them directly

Our solution is scalable and helps control other areas of the home depending on the installation: heating, indoor and outdoor lighting, roller shutters, windows and doors, and other intelligent actions.

# installation for a smart home

## Centralised indoor wireless command keypad with touchscreen



CLT 8000  
Ref. 6413252

It's the most comprehensive option. You can use it to perform any action, carry out programming and define all the settings of the alarm system, including event history

## Wireless badge reader



LB 2000  
Ref. 6413254

Enables the system to activate or deactivate with badges

## Wireless indoor button keypad



CLS 8000  
Ref. 6413253

- It activates or deactivates up to 8 zones of the alarm system
- IO user codes

## Wireless outdoor button keypad



CLE 8000  
Ref. 6413255

It activates or deactivates up to 8 zones of the alarm system and controls 2 chosen automated actions (lighting, gate, roller shutters, etc.).

## Wireless keyring remote control



TL 2000  
Ref. 6413251

- Convenient size: slips into your pocket or bag
- 2 buttons for turning the alarm on/off
- 2 other buttons for managing either 2 security zones or 2 automated actions (gate, garage door, outdoor lighting, etc.)

## Smart Home Hub



Smart Home Hub (plug & play)  
Tydom Home  
Réf. 6700119  
To be linked to the camera



Smart Home Hub (consumer unit)  
Tydom Pro  
Réf. 6700117  
To be linked to the camera

Option Tydom Pro  
External antenna X3D Zigbee - Réf 6700118

Local and remote control from the free Tydom application



## Smart control

Tydom is a free app, connected to a Tydom smart home hub.

The app can be used on site or remotely on a smartphone or tablet as a way of keeping in touch with your home and its solutions whenever you wish.

Any warning identified by the security system is sent immediately so that you can react straight away, and it is easy to manage the alarm even when you're far from home.

The system is compatible with many other features and the installation can easily be adapted to controlling the heating, roller shutters, outdoor and indoor lighting, gates, garage doors, and more.

Everything is centralised and under control for your peace of mind.



**Smart Home Hub (plug & play)**  
**Tydom Home**  
**Réf. 6700119**  
To be linked to the camera



**Smart Home Hub (consumer unit)**  
**Tydom Pro**  
**Réf. 6700117**  
To be linked to the camera

*Option Tydom Pro*  
**External antenna X3D Zigbee**  
- Réf 6700118

Local and remote control from the free Tydom application

## Smart cameras

Tycam cameras have their rightful place in smart security.

They are linked to the Tydom smart home hub and ensure 24/7 monitoring, day and night.

Associated with Tyxal+ they synchronise with the alarm in a single action

Full HD quality, wide angle up to 130°, H265



**Smart indoor camera**  
**Tycam 1100 Indoor**  
**Réf. 6417006**  
To be linked to a Tydom Home,  
Pro or 2.O smart home hub



**Smart outdoor camera**  
**Tycam 2100 Outdoor**  
**Réf. 6417007**  
To be linked to a Tydom Home,  
Pro or 2.O smart home hub

- Fitted with integrated double detection (motion and video), nothing escapes the camera's field of vision (range 10 m - wide angle 130°). It automatically sends an alert including a video to your smartphone and triggers the alarm siren.
- 24/7 monitoring

- Day or night, you are guaranteed to have a perfect view of whatever is happening outside your home thanks to the camera's long visual range (range 30 m - wide angle 130°), even in complete darkness.
- Notification on your smartphone in the event of an alert: effective prevention well ahead of any attempt to break into your premises.

## Accessories for Tycam smart cameras

Supply via mains supply (240v) or Ethernet cable (POE).

Adding a junction box (BRE) enhances the protection of the camera's connections from bad weather and vandalism.



**4-Port PoE switch to connect and supply Tycam cameras**  
**POE SW 4**  
**Réf. 6417010**



**Junction box for outdoor smart camera**  
**BRE Tycam 2100 Outdoor**  
**Réf. 6417008**

**Delta Dore also means  
remote control**

# DETECTION



Smoke, leaks, power cuts... It's not just break-ins that could cause damage in your daily life. That's why we have developed specific detectors to protect you from domestic hazards.

Compatible with a Tyxal+ alarm control unit to share information remotely



**Wireless smoke detector**  
DFR  
Ref. 6412313

- Works in autonomous mode to warn occupants with its built-in siren
- Can be linked to roller shutters and lights to make it easier for occupants to evacuate the premises if needed



**Wireless leak detector**  
DF  
Ref. 6412303

As it is installed in places that are likely to be exposed to leaks and areas prone to flooding, it warns of any presence of liquid using its transmitter.



**Wireless mains power failure detector**  
DCS  
Ref. 6412314

Plugged into a power outlet, it sends a warning signal when a mains power failure occurs, thereby preventing potential damage (e.g. freezer).



**Wireless universal detector**  
DU  
Ref. 6412302

- The wireless universal detector transmits any detection made by a wired sensor, should they already exist in the premises.

**Delta Dore also means  
technical detection**



security

# INDEX

smart

## Wireless Tyxal+ security pack

		Ref.
Tyxal+ Access pack	Wireless 2-zone alarm pack	6410186
Tyxal+ pack	Wireless 2-area alarm pack with home automation hub	6410168
Tydom video pack	IP/GSM smart home and video detector pack	6410173

## Tyxal+ wireless alarm control unit

Tyxal+ CS 8000	Wireless 2-zone siren alarm control unit	6411120
Tyxal+ CS 2000	Wireless 2-zone siren alarm control unit	6411124

## Connected cameras

Tycam 1100 Indoor	Connected indoor camera	6417006
Tycam 2100 Outdoor	Smart outdoor camera	6417007

## Wireless keypads and controls

Tyxal+ CLT 8000	Wireless touch screen keypad	6413252
Tyxal+ CLS 8000	Wireless button keypad	6413253
Tyxal+ CLE 8000	Wireless outdoor button keypad	6413255
Tyxal+ LB 2000	Wireless badge reader	6413254
Tyxal+ TL 2000	Wireless remote control for alarms and/or control systems	6413251

## Smart Home Hubs

		Ref.
Tydom Home	Smart Home Hub (plug & play)	6700119
Tydom Pro	Smart Home Hub (consumer unit)	6700117
External antenna X3D Zigbee	Option Tydom Pro	6700118

## Wireless sirens

Tyxal+ SI	Wireless indoor siren	6415220
Tyxal+ SEF2	Wireless outdoor flash siren	6415224

## Technical

### Tyxal+ motion sensors

Tyxal+ DMB	Wireless dual lens motion sensor	6412286
Tyxal+ DMBV	Video detector to remove doubt	6412287
Tyxal+ DMBD	Wireless dual technology dual lens motion sensor	6412311
Tyxal+ DME90	Volumetric outdoor protection	6412321
Tyxal+ DMF	Outdoor protective barrier	6412322
Tyxal+ DME180	Wide angle volumetric outdoor protection	6412323
Tyxal+ DMDR BL	Outdoor curtain detector	6412317
Tyxal+ DMDR BR	Outdoor curtain detector	6412318

### Lens

Tyxal+ LS DMB-DMBY-DMBD	Standard lens for dual-lens motion detector, dual-lens video and dual-technology dual lens	6416228
Tyxal+ LA DMB-DMBY-DMBD	Animal immunity lens for dual-lens motion sensor, dual lens video and dual technology dual lens	6416229

Detectors (continued)

Ball joint

<b>TyXAL+ RO DMB-DMBV-DMBD</b>	Ball joint	6416221
--------------------------------	------------	---------

TyXal+ door/window magnetic sensors

<b>TyXal+ DO BL</b>	Wireless door/window magnetic contacts	6412288
<b>TyXal+ DO BR</b>	Wireless door/window magnetic contacts	6412295
<b>TyXal+ DO GR</b>	Wireless door/window magnetic contacts	6412296
<b>TyXal+ MDO BL</b>	Wireless door/window magnetic micro-sensor	6412305
<b>TyXal+ MDO BR</b>	Wireless door/window magnetic micro-sensor	6412306
<b>TyXal+ MDO GR</b>	Wireless door/window magnetic micro-sensor	6412307
<b>TyXal+ DOI PVC</b>	Wireless invisible door/window magnetic sensor for PVC window	6412308
<b>TyXal+ DOS</b>	Wireless floor contact door/window magnetic sensor	6412300

TyXal+ technical sensors

<b>TyXal+ DCP</b>	Wireless piezoelectric impact detector	6412301
<b>TyXal+ DVR</b>	Wireless roller shutter sensor	6412304

TyXal+ domestic hazard sensors

<b>TyXal+ DFR</b>	Wireless smoke detector	6412313
<b>DAAF</b>	Autonomous smoke sensor	6402116
<b>TyXal+ DF</b>	Wireless leak sensor	6412303
<b>TyXal+ DCS</b>	Wireless mains power failure sensor	6412314
<b>TyXal+ DU</b>	Wireless universal sensor	6412302

Ref.

Repeater

<b>TyXal+ Rep</b>	Wireless repeater	6414119
-------------------	-------------------	---------

Accessories

<b>TyXal+ BRFID</b>	RFID badge for TyXal+ LB2000 badge reader	6413224
<b>BRE</b>	Junction box for Tycam 2100 Outdoor	6417008
<b>SW4 POE</b>	POE switch for Tycam 1100 Indoor and 2100 Outdoor	6417010

Batteries

<b>TyXal+ BAT SEF2</b>	Lithium manganese battery for wireless outdoor flash siren SEF2	6416238
<b>TyXal+ BAT CS 8000-SI-SEFIO3</b>	Lithium battery unit for siren control unit, indoor and outdoor siren	6416222
<b>TyXal+ BAT CL T 8000</b>	Lithium battery pack for touchscreen keypad with screen	6416223
<b>TyXal+ BAT DMBV</b>	Lithium battery pack for dual-lens motion sensor video	6416224
<b>TyXal+ BAT DME-DMBE-DMBD</b>	Lithium battery pack for dual-technology dual-lens motion sensor, outdoor motion detector and outdoor barrier motion detector	6416227
<b>TyXal+ BAT 1/2AA</b>	Lithium battery DOS - DCP - DU - DF - DVR	6416230
<b>TyXal+ BAT AA</b>	Lithium battery DO - LB 2000 - CLS 8000 - CLE 8000	6416231
<b>TyXal+ BAT A</b>	DMB lithium battery	6416232
<b>TyXal+ BAT D</b>	Lithium battery TTRTC - TTGSM - Tydom 2 - REP	6416233
<b>TyXal+ BAT DMDR</b>	Lithium pack for outdoor curtain sensor	6416234

Ref.



## Delta Dore: we are by your side

Do you have a sales-related question?

Do you have a technical question?

020 7660 2919

[Technical.info@deltadore.com](mailto:Technical.info@deltadore.com)

Head to the "Pro Area" of our website for more information:

[deltadore.co.uk /pro-zone](https://deltadore.co.uk/pro-zone)



**DELTA  
DORE**

Smart homes, better living



COM3701674 Rev1 Security guide UK - April 2023 - Photo credit: AdobeStock | Stocksy | Pexels | Shutterstock | iStock | Delta Dore. Photos are not legally binding.  
Delta Dore reserves the right to modify these characteristics without prior notice.